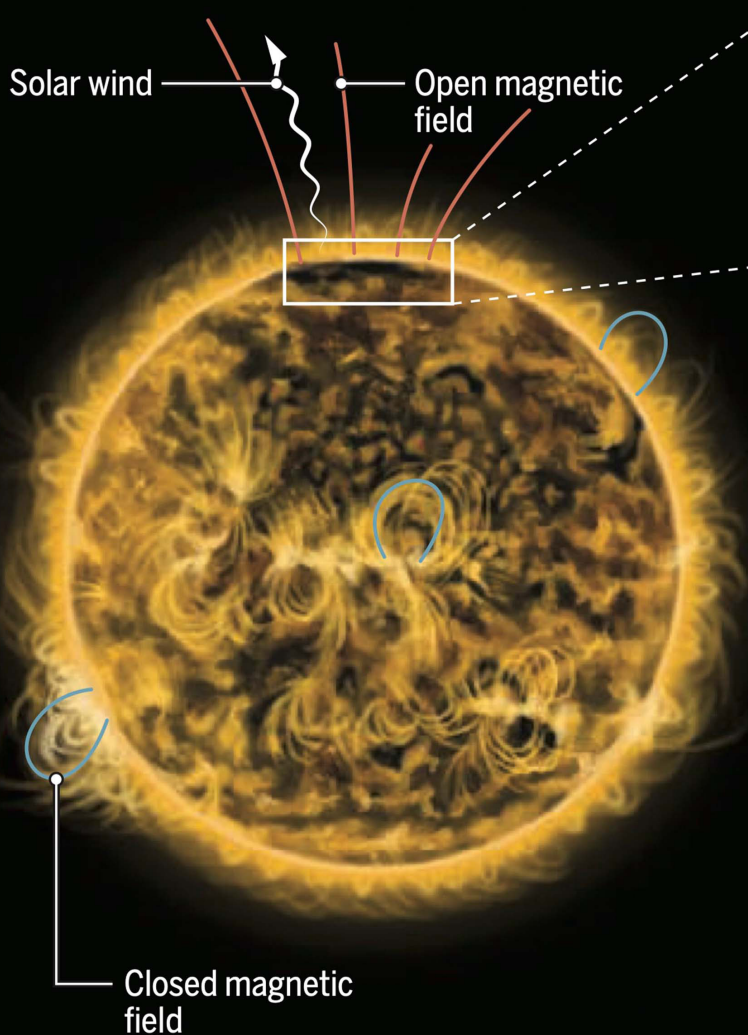
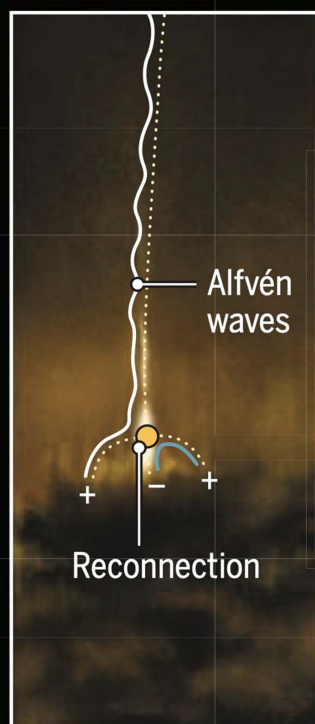
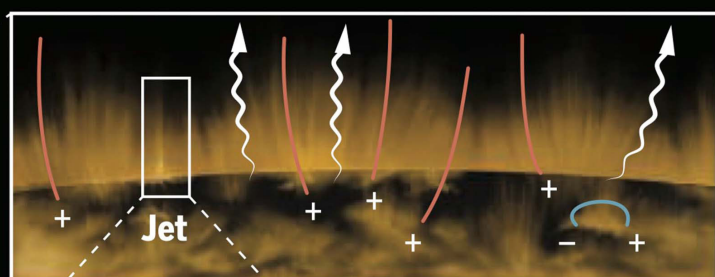


PROBING SOLAR POLAR REGIONS

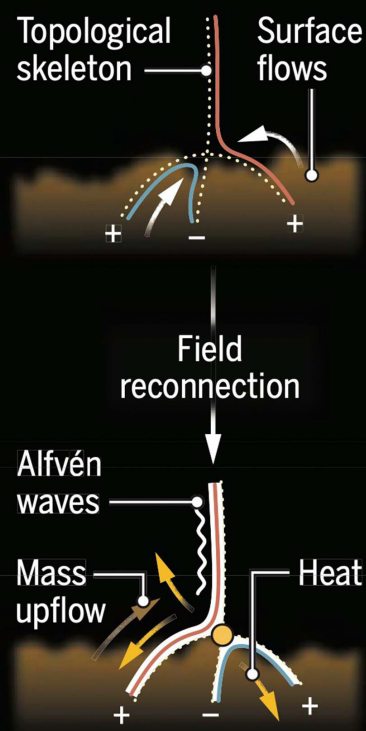
Polar region of the Sun



Coronal hole



Plasma ejection



IMPRINT

太空 | TAIKONG

ISSI-BJ Magazine

License: CC BY-NC-ND 4.0



Address: No.1 Nanertiao,
Zhongguancun,
Haidian District,
Beijing, China

Postcode: 100190

Phone: +86-10-62582811

Website: www.issibj.ac.cn

Editor

Francesca Garfagnoli,
Editorial & PR Manager

Front Cover:

Solar polar observations by EUI on the Solar Orbiter spacecraft reveal plasma ejections (jets) that permeate coronal holes (areas of open magnetic fields). Jets arise from regions of magnetic reconnection. This reconfiguration of the magnetic fields also generates heat, Alfvén waves, and mass up flows that, together with the jets, provide energy and momentum to the solar wind. Figure from Ugarte-Urra et al.

AUTHORS

Yuanyong Deng^{1,2,27} Hui Tian^{3,2} Jie Jiang⁴ Shuhong Yang^{1,2,27} Hao Li² Robert Cameron⁵ Laurent Gizon^{5,6,7} Louise Harra^{8,9} Robert F. Wimmer-Schweingruber¹⁰ Frédéric Auchère¹¹ Xianying Bai^{1,2,27} Luis Bellot Rubio¹² Linjie Chen² Pengfei Chen^{13,14} Lakshmi Pradeep Chitta⁵ Jackie Davies¹⁵ Fabio Favata^{16,17} Li Feng¹⁸ Xueshang Feng² Weiqun Gan^{18,27} Don Hassler¹⁹ Jiansen He³ Junfeng Hou^{1,2,27} Zhenyong Hou³ Chunlan Jin^{1,2} Wenya Li² Jiaben Lin^{1,2,27} Dibyendu Nandi²⁰ Vaibhav Pant²¹ Marco Romoli²² Taro Sakao^{23,24} Krishna Prasad Sayamanthula²¹ Fang Shen^{2,28} Yang Su¹⁸ Shin Toriumi²³ Durgesh Tripathi²⁵ Linghua Wang³ JingJing Wang² Lidong Xia²⁶ Ming Xiong^{2,28} Yihua Yan^{2,1,27} Liping Yang² Shangbin Yang^{1,2,27} Mei Zhang^{1,2,27} Guiping Zhou^{1,2,27} Xiaoshuai Zhu² Jingxiu Wang^{1,2,27} Chi Wang²

1 (National Astronomical Observatories, Chinese Academy of Sciences, Beijing 100101, People's Republic of China)

2 (State Key Laboratory of Solar Activity and Space Weather, National Space Science Center, Chinese Academy of Sciences, Beijing, 100190, People's Republic of China)

3 (School of Earth and Space Sciences, Peking University, Beijing 100871, People's Republic of China)

4 (School of Space and Earth Sciences, Beihang University, Beijing, 102206, People's Republic of China)

5 (Max-Planck-Institut für Sonnensystemforschung, Justus-von-Liebig-Weg 3, 37077 Göttingen, Germany)

6 (Institut für Astrophysik, Georg-August-Universität Göttingen, 37077 Göttingen, Germany)

7 (Center for Space Science, NYUAD Institute, New York University Abu Dhabi, Abu Dhabi, UAE)

8 (Physikalisch-Meteorologisches Observatorium Davos, World Radiation Center, 7260 Davos Dorf, Switzerland)

9 (Die Eidgenössische Technische Hochschule Zürich, 8093 Zürich, Switzerland)

10 (Institute of Experimental and Applied Physics, Kiel University, D-24118 Kiel, Germany)

11 (Institut d'Astrophysique Spatiale, 91405 Orsay Cedex, France)

12 (Instituto de Astrofísica de Andalucía (CSIC), Apdo. de Correos 3004, 18080 Granada, Spain)

13 (School of Astronomy and Space Science, Nanjing University, Nanjing 210023, People's Republic of China)

14 (Key Laboratory of Modern Astronomy and Astrophysics, Ministry of Education, Nanjing 210023, People's Republic of China)

15 (RAL Space, STFC Rutherford Appleton Laboratory, Harwell Campus, Didcot OX11 0QX, UK)

16 (INAF—Osservatorio Astronomico di Palermo, Piazza del Parlamento, 1, 90134 Palermo, Italy)

17 (Department of Physics, Imperial College London, Exhibition Road, London SW7 2AZ, UK)

18 (Key Laboratory of Dark Matter and Space Astronomy, Purple Mountain Observatory, CAS, Nanjing 210023, China)

19 (Southwest Research Institute, Boulder, CO 80302, USA)

20 (Center of Excellence in Space Sciences, Indian Institute of Space Education and Research, Kolkata, India)

21 (Aryabhata Research Institute of Observational Sciences, Nainital, 263002, India)

22 (Dip. di Fisica e Astronomia, Università di Firenze, Via Sansone 1, 50019 Sesto Fiorentino (FI), Italy)

23 (Institute of Space and Astronautical Science, Japan Aerospace Exploration Agency, Sagami, Kanagawa 252-5210, Japan)

24 (Department of Space and Astronautical Science, School of Physical Sciences, SOKENDAI (The Graduate University for Advanced Studies), Sagami, Kanagawa 252-5210, Japan)

25 (Inter-University Centre for Astronomy and Astrophysics, Post Bag 4, Ganeshkhind, Pune 411007, India)

26 (School of Space Science and Technology, Shandong University, Weihai, Shandong 264209, People's Republic of China)

27 (School of Astronomy and Space Science, University of Chinese Academy of Sciences, Beijing 100049, People's Republic of China)

28 (College of Earth and Planetary Sciences, University of Chinese Academy of Sciences, Beijing 100049, People's Republic of China)

ABSTRACT

Solar polar regions are vital in controlling solar activities and driving space weather. Despite numerous efforts to explore these regions, to date no imaging observations of the Sun's poles have been achieved from vantage points out of the ecliptic plane, leaving us uncertainties about their behavior and evolution in sufficient detail. This observation gap gives rise to unanswered three top-level scientific questions, 1) How does the solar dynamo work and drive the solar magnetic cycle? 2) What generates and accelerates the fast solar wind? 3) How do the space weather processes globally originate and propagate throughout the solar system? The Solar Polar-orbit Observatory (SPO) mission, a solar polar exploration spacecraft, is proposed to address these three unanswered scientific questions by imaging the Sun's poles from large heliolatitudes. In order to achieve its scientific goals, SPO will carry six remote-sensing and four in-situ instruments to measure the vector magnetic fields and Doppler velocity fields in the photosphere, to observe the Sun in the extreme ultraviolet, X-ray, and radio wave bands, to image the corona and the heliosphere up to $45 R_{\odot}$, and to conduct in-situ detection of magnetic fields, and low- and high-energy particles in the solar wind. The SPO mission is capable of 1) providing critical vector magnetic fields and Doppler velocities of the polar regions to deepen our understanding of the origin of the solar magnetic cycle, 2) providing unprecedented imaging observations of the solar poles alongside in-situ measurements of charged particles and magnetic fields from high heliolatitudes to unveil the generation and the acceleration of the fast solar wind, and 3) providing observational constraints to improve our ability to model and predict the three-dimensional (3D) structures and propagations of space weather events.

FOREWORD

The Sun is our nearest star. As a predominantly stellar astrophysicist, I marvel at the unprecedented level of detail our solar physics colleagues have access to, a level that we can only dream of once we reach beyond our immediate space environment. Yet, most solar physics research to date has been confined to a side-on view of our favourite star. The solar polar regions are much harder to access, requiring complex spacecraft manoeuvres out of the Earth's orbital plane. Nevertheless, understanding the physics governing the largely unexplored and poorly imaged solar polar regions has the real potential to help us better understand solar activity and the drivers of space weather.

With the development of the Solar Polar Orbiter mission, detailed imagery of higher solar latitudes will more easily come within reach of our modern analysis methods. The recently held ISSI-Beijing Forum on 'Probing Solar Polar Regions' was hence a timely opportunity to look forward to the wealth of new information we will be able to glean from scrutinising the Sun from a different and unique vantage point.

The scientific importance and complementarity of the forthcoming data was clearly well-understood by the Forum's world-leading scientists convening the meeting—ISSI-BJ Discipline Scientist, Prof. Peng-fei Chen (Nanjing University, China); ISSI-BJ Senior Advisor, Prof. Fabio Favata (Imperial College London, UK); and Profs. Yuanyong Deng (National Astronomical Observatories, Chinese Academy of Sciences), Hui Tian (Peking University, China), Durgesh Tripathi (Inter-University Center for Astronomy and Astrophysics, India), Linghua Wang

(Peking University, China; ISSI-BJ Science Committee member) and Robert F. Wimmer-Schweingruber (Kiel University, Germany).

The report in front of you reflects the Forum's excellent discussions, showing a clear path forward to improving our understanding of one of the last mysterious territories of our nearest star. I look forward to seeing the actual results from this mission; based on our current capabilities at lower latitudes, I can only expect more mind-blowing images, movies and – most importantly, of course – scientific insights that will inform a wide range of disciplines that rely directly or indirectly on managing or understanding solar activity or the effects of space weather.

As always, such excellent, high-level ISSI-BJ Forums could not have taken place without the dedication and professionalism of our team on the ground. In particular, I would like to call out the stellar support by Lijuan En and Francesca Garfagnoli, whose hard work enabled the Forum's participants to experience a smooth and unencumbered meeting where they could fully focus on driving forward the scientific aspects of this exciting discipline.



Prof. Richard de Grijs
Executive Director, ISSI-BJ

0 Introduction

0.1 Forum Overview

The poles remain as the least-known mysterious territory on the Sun, yet they are essential for comprehending the Sun's magnetic dynamics and their impact on solar activities and space weather phenomena. The proposed Solar Polar-orbit Observatory (SPO) ^[1], with an orbital inclination angle of 80° and a small ellipticity, is expected to make breakthroughs on three top-level scientific questions, i.e. 1) How does the solar dynamo work and drive the solar magnetic cycle? 2) What generates and accelerates the fast solar wind? 3) How do the space weather processes globally originate and propagate throughout the solar system? In order to pinpoint the scientific objectives and maximize the scientific output of the SPO mission, International Space Science Institute - Beijing (ISSI-BJ) organized an international forum in Beijing during 7-8 November 2024. The preliminary scientific objectives of the SPO mission and the tentatively selected payloads were introduced in this forum. This forum also served as a platform to discuss how the SPO observations could advance our understanding of these most important scientific questions in solar physics. Moreover, suggestions and international collaborations regarding the instrument design, science preparation and synergies with other missions have also been discussed during the forum. SPO is scheduled to be launched between January and February 2029. It will, for the first time, image the Sun's poles from high heliolatitudes. The achieved observations will be able to provide invaluable information to advance our knowledge in the solar physics.

0.2 Importance of Exploring the Sun's Poles

The Sun is the driving force behind life on Earth, providing the energy, warmth, and light necessary for our planet to remain habitable. No aspect of life was unaffected by the Sun ^[2]. Scientific observations of the Sun have been carried out for 400 years ago. The studies of the Sun have explored nearly the entire electromagnetic spectrum, including X-rays, ultraviolet, optical, infrared, and radio radiation, as well as the solar neutrinos. However, to date we are still blind to what the Sun's poles actually look like and how they behave in enough detail, simply because the observations of the Sun are limited in the vicinity of the ecliptic plane, which significantly hinder our understanding of the solar dynamo, and the origin of the fast solar wind.

Exploring the Sun's poles is of great importance in solar physics, since the magnetic fields and the dynamical processes in these regions play a key role in characterizing the evolution of the solar internal dynamo and the distribution of the external heliosphere magnetic fields ^[3]. In addition, the polar magnetic fields likely serve as key indicators of the strength of the next solar cycle^[4,5], and dominate the large-scale coronal structures ^[6]. Moreover, the polar coronal holes are the primary source regions for the persistent and stable fast solar wind ^[7]. The lack of imaging observations from high latitudes leaves the origins of solar dynamo and the fast solar wind enigmatic. In addition, observations from a polar vantage point, combined with those obtained in the ecliptic plane, will be able to provide the whole boundary conditions to create a data-driven 3D heliospheric magnetohydrodynamic models, laying the foundation for understanding the overall structures of the heliosphere and predicting the space weather and climatology in the heliospheric space.

1 Observations of the Solar Polar Regions

Although until to date we have not imaged the Sun's poles directly, the exploration of the Sun's poles has been attempted. In this section, we brief summarize the existing observations of the polar regions obtained both in and out of the ecliptic plane.

1.1 Observations in the Ecliptic Plane

Most observations of the Sun's poles are obtained in the vicinity of the ecliptic plane. Since the tilt angle of the Sun's rotation axis is approximately 7.25° with respect to the normal of the ecliptic plane, during a specific time period the polar region is observable even in the ecliptic plane although with an oblique angle larger than 82° . For instance, the south and north poles are observable from the Earth direction in March and September, respectively.

The observations of the magnetic fields in the polar regions date back to the 1950s, when Babcock et al. ^[8] measured a mean field strength of 1 G. Deng et al. ^[9] later used a video magnetograph installed at Huairou Solar Observing Stations ^[10] to infer the vector magnetic fields from the polarization observations of the Fe I line at 532.4 nm. It was found that in the minimal phase between the solar cycle 22 and 23, the net flux in the south polar region is approximately -2.5×10^{22} Mx, which is around the order of the interplanetary magnetic field measured at a distance of 1 AU ^[10].

The Full Stokes observations of the polar regions with higher spatial and spectral resolutions were achieved by the Stokes Spectro-Polarimeter (SP) attached to the Solar Optical Telescope (SOT) ^[11] aboard the Hinode satellite ^[12] since its launch in late 2006. Applying a Milne-Eddington inversion code, the landscape of the magnetic fields in the polar region was obtained by Tsuneta et al. ^[13], revealing vertically oriented magnetic flux tubes with a strength of 1KG in the polar region between latitudes of 70° and 90° . In addition, ubiquitous horizontal magnetic fields were also found in these regions. During the solar minimum the ratio between positive and negative magnetic fluxes is 1/2 in polar regions, which suggests only 1/3 of these fluxes remain open ^[14]. Further studies by Jin et al. ^[15] identified more than 300 small-scale bipolar magnetic emergences (BMEs) in the polar region. The magnetic axes for these BME are randomly distributed, which does not follow the Hale's or the Joy's laws for the active regions.

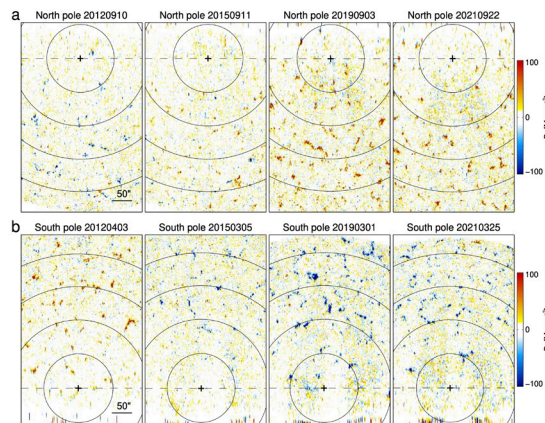


Figure 1: Polar view of the radial magnetic flux distribution in the polar caps observed by Hinode. (a) Radial magnetic field in the north polar cap measured in 2012, 2015, 2019, and 2021. (b) Similar to (a) but for the south pole. The plus signs mark the poles, and the solid curves indicate the latitude separated by 5° . Figure from Yang et al. ^[16].

Using the polar observations obtained by Hinode/SOT-SP from 2012 to 2021, covering the prereversal phase of the 24th solar cycle and the early rising phase of the 25th solar cycle, Yang et al. ^[16] studied the long-term variation of the polar magnetic fields (see Figure 1), and identified that the polarity reversal at high latitude lagged behind that at low latitude, indicating a poleward magnetic flux migration. Additionally, Yang et al. ^[17] found that the radial magnetic flux densities are weaker at high latitudes than those at lower latitudes during the solar cycle except the polarity reversal phase. To explore the meridional flow behind these observational evidences, a surface flux transport model ^[18] was employed by Yang et al. ^[17] to simulate the global radial magnetic field, revealing a poleward meridional flow located between the latitudes of 0° and 70° with a maximum amplitude of 11 m s⁻¹ at 35° latitude, and an equatorward meridional flow located between the latitudes of 70° and 90° with the maximum amplitude of 3 m s⁻¹ at 80° latitude.

In addition to the photospheric magnetic fields, observations of the upper atmosphere in the polar regions are also crucial. Coronal holes, regions where the open magnetic field lines extend into the interplanetary space, appear dark in extreme ultraviolet (EUV) and X-ray wavelengths and serve as primary source regions of the fast solar wind. Observations of coronal holes over the last two decades have revealed numerous small-scale apparent collimated flows through the solar atmosphere. These include solar chromospheric spicules, transition region network jets and EUV propagating intensity disturbances termed jetlets, in plume regions ^[19–21] These features are likely driven by magnetic interchange reconnection operating on small spatial scales of a few 100 km in the solar atmosphere ^[22–24], triggered by rapidly changing photospheric magnetic field on timescales less than 5 minutes ^[25].

The X-ray jets observed by Hinode have revealed two distinct velocities of approximately 200 and 800 km s⁻¹. The large number of X-ray jets, coupled with the high velocities of the apparent outflows, suggesting they may contribute to the fast solar wind ^[26]. Furthermore, in addition to jets observed in plume regions, Tian et al. ^[27] reported repetitive jets at a temperature of million degrees in the inter-plume regions. The role of these small jet features and their direct contribution to the solar wind remains a topic of ongoing debate. Except the jets, spicules permeated in the chromosphere are also considered to be able to contribute mass to the solar wind. Alfvénic waves carried by spicules with sufficient energy flux to accelerate the solar wind was reported by De Pontieu et al. ^[28] and McIntosh et al. ^[29]. However, their precise contribution remains an open question in heliophysics.

The Solar Ultraviolet Measurements of Emitted Radiation (SUMER) instrument aboard the Solar and Heliospheric Observatory (SOHO) mission ^[30] provided high resolution spectroscopic data at different locations on the Sun. Hassler et al. ^[31] explored a mid-latitude quiet Sun region and a polar region using the Ne VIII 77nm emission line. They showed that in the mid-latitude region, the strongest up flowing plasma occurred at the edges of the convective cells, while at the poles, the plasma was predominantly blue-shifted ^[32,33]. Spectroscopic measurements of the poles are also performed regularly by the Hinode mission. The observations suggest that the nascent fast solar wind in the coronal holes originates in the transition region and propagates along the open field lines ^[34]. A study of the polar regions over 6 years was carried out by Harra et al. ^[35], revealing enhanced line width in the coronal Fe XII emission lines known as non-thermal velocity. Additionally, SUMER observations of various ions suggest that these ions are heated by ion-cyclotron waves, which are converted from the Alfvén waves ^[36].

1.2 Observations out of the ecliptic plane

The above-mentioned results are all obtained via limb observations due to the observational limitations in the ecliptic plane. The observations out of the ecliptic plane are rare, but have been achieved by the Ulysses spacecraft ^[37] and will be achieved by the Solar Orbiter mission ^[38], which is gradually leaving the ecliptic plane.

The Ulysses spacecraft, by using a Jupiter fly-by, was the first to achieve a large inclination orbit of 80° with respect to the ecliptic plane. This allowed it to pass over the solar poles multiple times during its mission, completing three polar orbits (each covering 6 years) over different phases of Solar Cycles 22 and 23 ^[39]. Although Ulysses lacked imaging instruments, its in-situ instruments provided crucial measurements of charged particles and magnetic fields as close as 1.34 AU from the Sun.

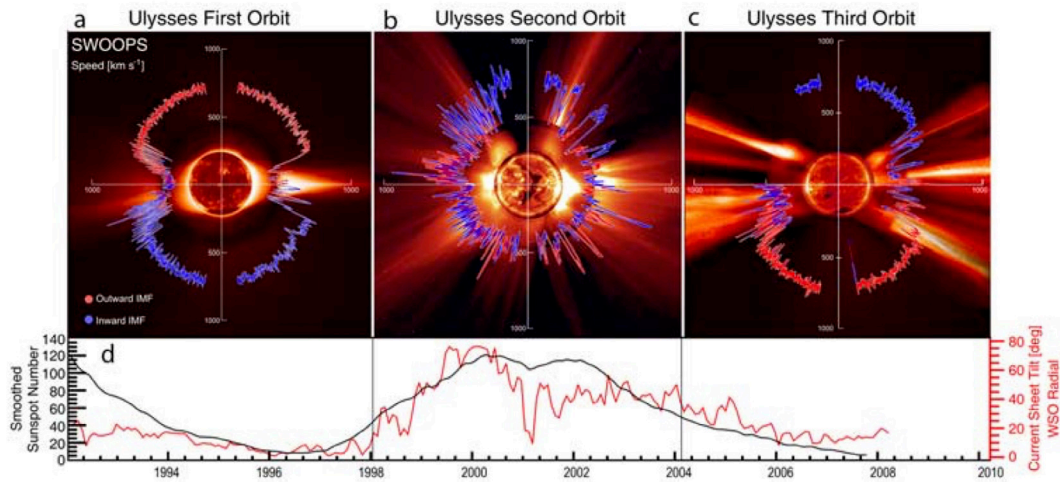


Figure 2: (a)–(c) Polar plots of the solar wind speed, colored by the Interplanetary Magnetic Field (IMF) polarity for Ulysses' three polar orbits. (d) Contemporaneous values for the smoothed sunspot number (black) and heliospheric current sheet tilt (red). Figure from McComas et al. ^[40].

As seen in Figure 2, the Ulysses' first orbit covers the solar minimum, revealing that the solar wind speed is higher at the poles compared to the equator. Its second orbit presents a more complex global structure of the solar wind across all heliolatitudes ^[40]. The speed of the fast solar wind from polar coronal holes is measured at approximately 750 km s^{-1} . As the Sun rotates, the wind from equator-ward extensions of the polar coronal holes interacts with the slower wind streams from the equatorial streamer belt, forming corotating interactions regions (CIRs) due to the Sun's rotation. Ulysses' orbit allowed for extensive CIR observations, contributing to our current understanding of the three-dimensional structure of the heliosphere. These findings were summarized in an ISSI publication on CIRs ^[41].

The solar wind flows away from the Sun, carrying with it both the frozen-in magnetic field and a tracer of the coronal region from which it originates. The elemental and charge-state composition of the heavy ions in the solar wind is determined in the chromosphere and corona, and remains unchanged thereafter ^[42]. This composition serves as an excellent discriminator for identifying the solar wind origin, even in highly compressed and heated plasma within CIRs ^[43].

One of the most remarkable discoveries made by Ulysses was that energetic particles accelerated at CIR-driven shocks are modulated by solar wind streams up to very high latitudes. Two mechanisms were proposed to explain this unexpected behavior. In the more traditional one, random motions of the photospheric footpoints of magnetic field lines “braid” the interplanetary field. Reconnection and enhanced turbulence of the field over the solar magnetic poles also play a role in this mechanism. Together with a small amount of scattering of particles across field lines, this mechanism is capable of explaining the unexpected Ulysses observations. The other, less traditional, mechanism involved a systematic latitudinal transport of magnetic field lines. Together, the photospheric differential rotation, the super radial expansion of coronal hole wind and the rigid rotation of coronal holes can result in significant latitudinal spread of the heliospheric magnetic field. Commonalities and differences of these two mechanisms are discussed by Fisk et al. ^[44].

The Solar Orbiter mission from the European Space Agency, launched in 2020, is a mission

designed to make close approaches to the Sun, within Mercury's orbit, every 150 days. The mission use Venus Gravity Assists (VGAs) to slowly raise the spacecraft orbit out of the ecliptic plane to a maximum heliolatitude of 34°. The Solar Orbiter carries six remote-sensing instruments including the Extreme Ultraviolet Imager (EUI) ^[45], the Spectral Imaging of the Coronal Environment (SPICE) ^[46], the Polarimetric and Helioseismic Imager (PHI) ^[47], the Spectrometer/Telescope for Imaging X-rays (STIX) ^[48], a coronagraph Metis ^[49] and the Solar Orbiter Heliospheric Imager (SoloHI) ^[50], and four in-situ instruments including the Solar Wind Analyser (SWA) ^[51], the Radio and Plasma Waves (RPW) instrument ^[52], the Magnetometer (MAG) ^[53] and the Energetic Particle Detector (EPD) ^[54].

Solar Orbiter is now leaving the ecliptic plane and will reaches a heliolatitude of 34°. Although the currently obtained observations are still limited to the ecliptic plane, Solar Orbiter has demonstrated its capability to provide invaluable insights into the Sun. The EUI is pushing the boundaries of the spatial resolution in the EUV imaging and has discovered small-scale transient brightening, known as “campfires” ^[55]. Its High-Resolution Imager (HRI) allows scientists to observe fine structures in the solar atmosphere, capturing details as small as 200 km when the spacecraft is at its closest approach of 0.29 AU ^[56]. By combining the far-side magnetograms obtained by PHI with the magnetograms obtained by HMI, Loeschl et al. ^[57] produced multi-view synoptic magnetic field maps. Furthermore, joint in-situ measurements by the Solar Orbiter and the Parker Solar Probe (PSP) shows that the damping and mechanical work performed by the Alfvén waves is sufficient to power the heating and acceleration of the fast solar wind in the inner heliosphere ^[58]. As the Solar Orbiter gradually increases its heliolatitude to 34°, it is expected to yield even more valuable data.

2 Top-Level Scientific Questions Regarding the Solar Polar Regions

Despite ongoing efforts to explore the Sun's polar regions, direct imaging observations of the Sun's poles from high latitudes remain unavailable, leading to three unsolved Sun's mysteries due to the lack of knowledge on the physical conditions in the solar polar regions ^[59].

2.1 How Does the Solar Dynamo Work and Drive the Solar Magnetic Cycle?

2.1.1 Key unresolved issues regarding the solar magnetic cycle

The solar magnetic cycle refers to the periodic variation in sunspot numbers on the solar surface, typically spanning approximately 11 years. This cycle governs the Sun's overall magnetic activity, encompassing phenomena such as sunspots, solar flares, and coronal mass ejections (CMEs). During each cycle, the Sun's magnetic poles undergo a reversal, with the magnetic polarities of the north and south poles switching.

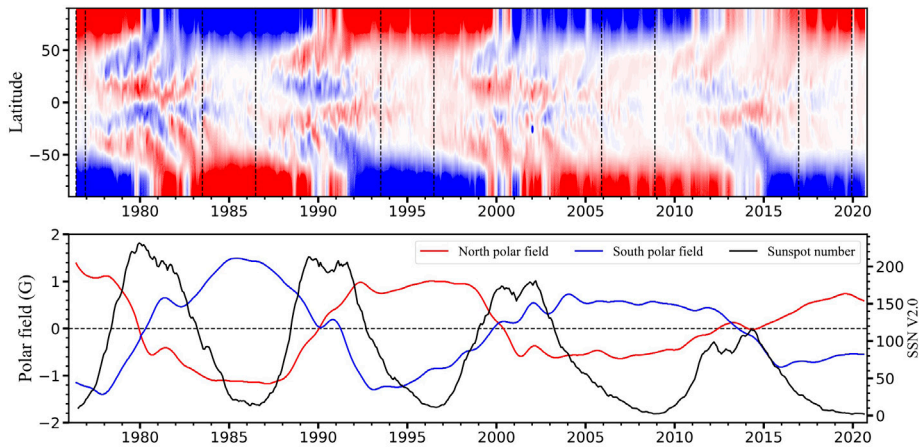


Figure 3: Surface magnetic field evolutions of the Sun since 1976. (a) The butterfly diagram of magnetic evolutions. (b) The time evolution of sunspot number (black line), and that of the magnetic intensity in the south (red line) and the north (blue line) poles. Figure from Guo et al. ^[61].

The Sun's global magnetic fields are generated through a dynamo process. The solar differential rotation acts upon the poloidal field to generate the toroidal field, which emerges as solar active regions. The meridional circulation then transports the magnetic flux of the following polarity field in the active regions towards the polar regions, forming the poloidal field and leading to a polarity reversal of the polar magnetic field ^[60]. The process repeats itself, resulting in the solar cycle (see Figure 3) ^[61].

During the past decades, the flux transport dynamo (FTD) developed by Wang et al. ^[62] and Choudhuri et al. ^[63] works as a paradigm for understanding the solar cycle. The prerequisite of the dynamo is that the meridional flow in the bottom of the convection zone must be equatorward. If there is either no flow or a poleward flow at the bottom of the convection zone, then the model cannot reproduce solar behavior ^[64]. In contrast, some helioseismology inversions gave controversial results of meridional flow, especially in deeper regions below about $0.9R_{\odot}$. The possible no flow ^[65] or a poleward flow ^[66] at the bottom of the convection zone prevents classical FTD models that rely on the tachocline from functioning properly. Hence, this raises two key questions to be addressed by future measurements: What is the realistic profile of the meridional flow, and if the flow is poleward, how does the solar dynamo operate? Especially,

where is the toroidal field originated and what mechanism generates the poloidal field.

The location of the toroidal magnetic field generation is one of the most debated issues in the solar dynamo theory. Traditionally, it was believed that the toroidal field forms in the tachocline, a shear layer at the base of the convection zone ^[67], leading to the development of traditional dynamo models. However, several challenges have emerged against this view: 1) The magnetic field characteristics in fully convective stars are similar with those in stars that possess a tachocline. 2) Traditional dynamo models tend to generate strong toroidal fields at high latitudes. 3) These models often produce quadrupolar magnetic field features that conflict with observations. 4) The meridional flow at the bottom of the convection zone is assumed to be equatorward. However the real form of meridional flows inside the Sun remains highly debated. These challenges have prompted some solar physicists to develop a new generation of dynamo models, proposing that the toroidal field is generated within the convection zone rather than the tachocline, in an effort to unveil the origin of the solar magnetic cycle. In the dynamo model developed by Zhang et al.[68], the poloidal field is dominated by large-scale dipolar and octupolar components, consistent with the magnetic power spectrum derived from observations by Luo et al. ^[69]. This configuration implies that radial shear plays a negligible role in the generation of the toroidal field, and that the tachocline has a minimal role in its generation. Instead, the toroidal field is likely generated within the bulk of the convection zone. While these new models address many of the above challenges, their discrepancies with traditional models and their agreement with observations require further validation.

Differential rotation and its temporal evolution, Torsional Oscillations (TO), are the other large-scale field to be measured. So far we are still lack of their information near the poles ^[70]. Poleward and equatorward branches of TO originate from about $\pm 50^\circ$ latitudes. The poleward branches are stronger than the equatorward ones, but lack of detailed observations. The properties of TOs, especially the poleward branches could provide constraints on the configurations of magnetic field in the convection zone and further help to pinpoint the location of the toroidal field generation ^[71]. At present, there are controversial results about torsional oscillations. Kosovichev et al. ^[72] infer that at low latitudes, acceleration bands first appear at the bottom of the convection zone and rise to the near surface. Based on the observational result, they suggest that the primary seat of the solar dynamo is located in a high-latitude zone of the tachocline. In contrast, helioseismology result given by Vorontsov et al. ^[73] showed that acceleration bands first appear near surface and propagate downward with time, based on which Vasil et al. ^[74] suggest that the solar dynamo begins near the surface.

The generation mechanism of the poloidal field also remains a topic of ongoing debate. Parker et al. ^[75] first proposed that the poloidal field arises from the kinematic helicity of turbulent convection, supported by mean-field theory. However, this theory has not yet been confirmed by observations. In contrast, the Babcock-Leighton (BL) mechanism ^[76–78], proposed in the 1960s based on observations, has gained increasing observational support in recent years and is now widely accepted. Cameron et al. ^[3] have demonstrated that Surface polar field is the major source of the toroidal flux, which means that the BL mechanism is the principal contributor to the poloidal field. So far the proposed ingredients affecting the polar field evolution include 1) ARs emergence as the flux source; 2) surface flux transport parameters including meridional flow and turbulent diffusion; 3) subduction of the polar field by the meridional flow sinking underneath the surface; and 4) radial diffusion occurring across the surface. It is controversial whether the latter two ingredients play a role in the polar field generation.

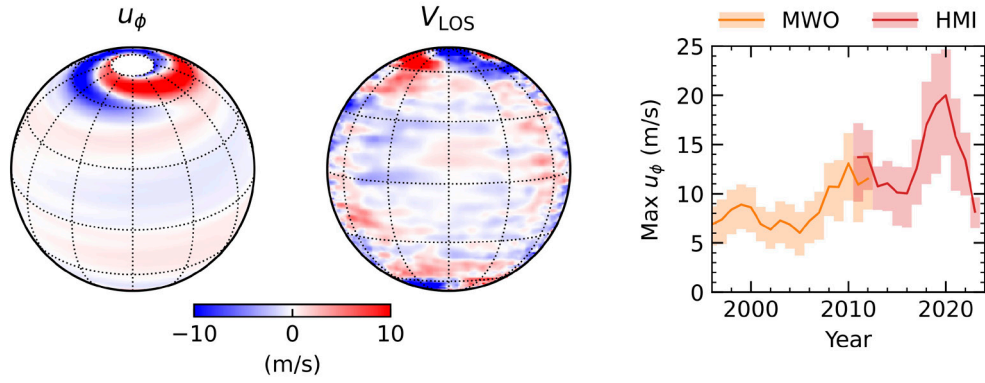


Figure 4: Observations of the high-latitude $m = 1$ solar inertial mode, which propagates retrograde in the Carrington frame (frequency -86 nHz). The left panel displays the mode's longitudinal velocity, u_ϕ , derived from ring-diagram helioseismology applied to HMI observations^[82]. The middle panel presents the mode's line-of-sight velocity, as seen in filtered HMI Dopplergrams. The right panel is a plot of the mode's maximum velocity over time, using data from both HMI and Mount Wilson Observatory. The amplitude of the mode is larger around solar cycle minima, as noted by Liang & Gizon^[83].

In addition, the solar polar magnetic field participates in the solar global dynamo process and may provide a seed field for the subsequent solar cycle, characterizing the solar dipole magnetic field, which corresponds to the poloidal magnetic field^[79]. Studies have shown that the polar magnetic field during the solar cycle minimum phase has a strong correlation with the strength of the subsequent solar cycle^[4,5]. This suggests that the polar magnetic field could serve as a precursor for predicting solar activity cycle^[80].

Turbulent convection is the small-scale flow field, which is essential for the dynamo behavior. Due to solar rotation, the poles serve as a window for revealing the dynamical regime and parameters of the convection zone. Through a series of numerical simulations, Hindman et al.^[81] explored how the nature of convective structures, especially the polar view, transitions through a series of morphological regimes as the Rossby number varies. Gizon et al.^[82] reported observations of a rich spectrum of inertial modes of the Sun over a wide range of latitudes, particularly the high-latitude $m = 1$ mode. Figure 4 shows the amplitude of the high-latitude $m = 1$ mode measured over the last two solar cycles^[83]. These inertial modes have diagnostic potential for the latitudinal entropy gradient, super-adiabaticity, and turbulent viscosity. These modes could also perhaps transport magnetic flux across the poles, and need to be taken into account to properly evaluate how much net toroidal magnetic flux is produced each cycle. The difficulty is that the flows close to the poles are poorly constrained from the ecliptic. Observations from a polar viewpoint can fill this gap. Moreover, the high-latitude inertial modes can also be used as diagnostics to improve our understanding of the structure of the solar convection zone^[82].

2.1.2 Limitations in current research

Certain limitations currently impede progress in resolving the key unresolved issues of the solar cycle outlined in the previous subsection. The precise characteristics of meridional circulation inside the Sun remain poorly understood. The radial structure of the meridional flow is important for constraining our understanding of the convection, however, the flows are weak and the waves propagate quickly at this depth. Observations of the meridional circulation, especially in the deeper layers, show different results depending on the analytical method used, and there is currently no consensus. This discrepancy is partly due to the limited observations from a single vantage point in the ecliptic plane.

Helioseismology enables the detection of solar internal flows by analyzing the propagation of pressure waves through the Sun. Local helioseismic techniques, by tracking and analyzing Doppler velocity maps of small regions on the solar surface, infer internal flows beneath the Sun's surface. Nevertheless, due to the limited viewing angle from the ecliptic plane, current

observations are insufficient for studying the polar regions using local helioseismology. The projection effect, the center-to-limb effect and the shrinking-Sun effect caused by the oblique observations introduce significant errors, that hinder the velocity measurements in local helioseismology^[84], making the inversion of the high latitude flow fields even more uncertain.

The distribution of polar magnetic flux presented in the magnetic butterfly diagram largely depends on the theoretical extrapolation of the solar surface magnetic flux transport model, since the measurement of the polar magnetic field strength is still a challenging task due to the observational projection effect. Observation of the solar poles from the ecliptic plane results in the radial magnetic field appearing as a transverse component, making the measurements of the magnetic fields more challenging. Additionally, the oblique viewing angle leads to a single pixel corresponding to a larger spatial scale in the polar regions, giving rise to the difficulties in the magnetic field measurements. Observations near the solar limb also suffer from limb darkening effects, altering spectral line intensities and formation heights, thereby complicating magnetic field measurements.

2.1.3 The need for polar observations

To address these limitations, a spacecraft with a high inclination orbit with respect to the ecliptic plane is needed to perform direct imaging of the solar polar regions from high latitudes. Such observations would provide more accurate data on magnetic fields and internal flows in these critical regions, which are essential for unveiling the origin of the solar magnetic cycle and for pinpointing the solar dynamo model.

Observations of the Doppler velocities from polar viewpoints, combined with viewpoints in ecliptic plane are the effective tools to get the differential rotation and convection structures near the poles and meridional flow in the deep convection zone^[85]. Combining observations from different vantage points directly increase the spatial coverage of observations, which can effectively increase the signal-to-noise ratio^[86] by decreasing the shrinking-sun effect and the center-to-limb effect, reduce the spatial leaks in the spectrum, and improve the spatial resolution of the sensitivity kernel^[87].

Vector magnetic field measurement in the polar region will help to answer whether the polar field is dominated the radial component. With tilt quenching^[88,89] and latitudinal quenching^[90], no radial diffusion is required to get the regular polar field reversal in the surface flux transport simulations for cycles 15-21^[91]. For 2D BL dynamo model, Cameron et al.^[92] demonstrated that radial boundary condition combined with near surface radial pumping can obtain the surface field evolution consistent with results from SFT simulations without radial diffusion. Luo et al. (2024, in prep.) present a more general formulation of no radial diffusion boundary condition. But whether there is radial diffusion is still an open question. The measurement of the net polar flux and verification of the net flux across the equator could help to answer the question.

In addition, our understanding of the solar dynamo would also be enhanced by synoptic measurements of the latitudinal component of the solar large-scale magnetic field. Currently, synoptic maps of the axisymmetric radial and longitudinal components of the solar magnetic field have been obtained, extending over four cycles^[93]. These two components can be determined from various observatories. Determining the missing latitudinal component from polar observations over the course of a solar cycle would complete our understanding of the solar global magnetic field structure.

Key advancements of the observations from polar vantage points:

- 1) Utilizing the polar observations, we can accurately infer the Sun's internal flow fields in the polar regions from the Doppler velocity measurements through helioseismology, therefore identify the generation location of the toroidal field and constrain solar dynamo models.

- 2) Accurate measurements of the magnetic fields in the solar polar regions will help to determine the generation mechanism of the poloidal field generation, enabling the discrimination between different solar dynamo models.

2.2 What Generates and Accelerates the Fast Solar Wind?

2.2.1 Key unresolved issues regarding the fast solar wind

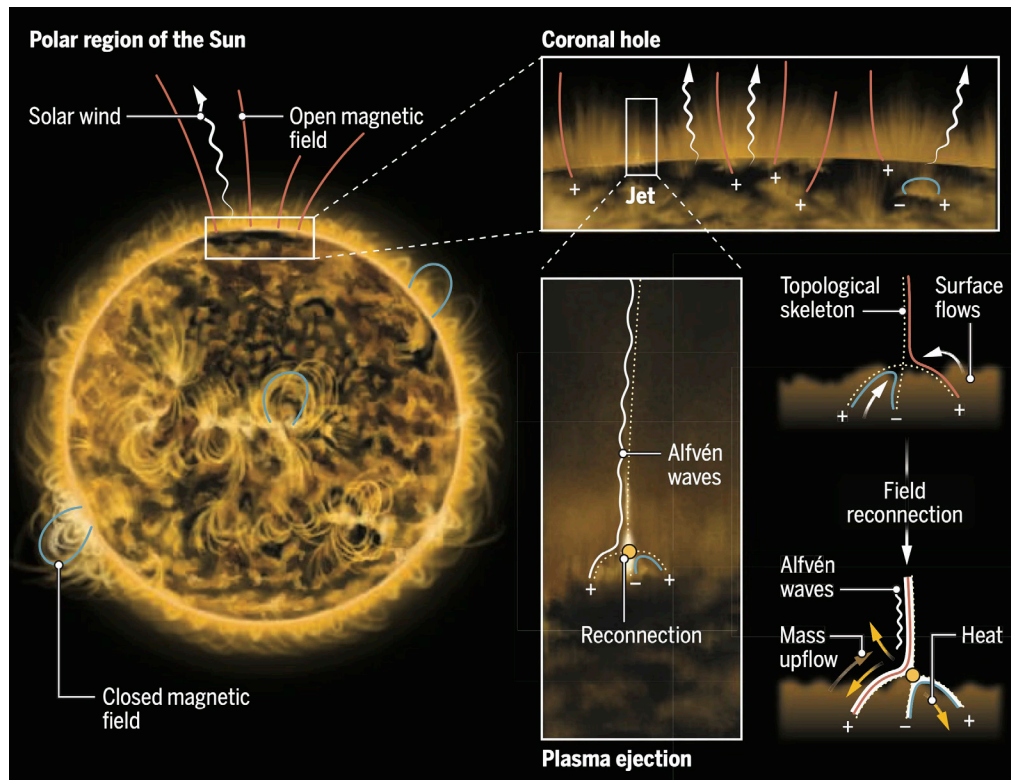


Figure 5: Solar polar observations by EUV on the Solar Orbiter spacecraft reveal plasma ejections (jets) that permeate coronal holes (areas of open magnetic fields). Jets arise from regions of magnetic reconnection. This reconfiguration of the magnetic fields also generates heat, Alfvén waves, and mass up flows that, together with the jets, provide energy and momentum to the solar wind. Figure from Ugarte-Urra et al. ^[94]

The solar wind is a magnetized plasma stream originating from the solar atmosphere, gaining energy and becoming supersonic near the Sun. It flows outward from the solar corona, and extends throughout the solar system. The fast solar wind, often originating from polar coronal holes (see Figure 5) ^[94], permeates the majority of the heliospheric volume, dominating the physical environment of interplanetary space. Therefore, the fast solar wind is a key component of space weather and can significantly impact the Earth and its environment ^[95]. Its properties and origin remain central topics in heliospheric physics.

The Ulysses mission (1990–2009), the only spacecraft to have explored the heliosphere from a solar polar orbit, provided in-situ measurements of the solar wind plasma properties, the electromagnetic fields, and the ionic composition. Ulysses confirmed the bimodal nature of the solar wind around solar minimum ^[96]. This bimodal state consists of a relatively homogeneous fast solar wind ($>500 \text{ km s}^{-1}$) at high heliolatitudes and a highly variable slow wind ($<500 \text{ km s}^{-1}$) at lower latitudes. During the solar minimum, the fast solar wind originates from the polar coronal holes, which are dominated by single polarity and open magnetic fields ^[40], as shown in Figure 5. In contrast, slow solar wind is largely confined to the space around the solar equatorial plane. The fast solar wind originates deep within large coronal holes ^[97], while the slow solar wind likely stems from open-closed magnetic field boundaries (e.g., active region edges, coronal hole boundaries), small low-latitude coronal holes, or helmet streamers ^[98–100].

In recent decades, significant progress has been made in understanding the origin and acceleration of the slow solar wind through in-situ measurements and high-resolution remote-sensing observations. However, the lack of direct imaging observations from high latitudes has hindered the studies of the fast solar wind. To date, the spectroscopic observations have indicated the presence of coronal outflows within polar coronal holes ^[31,32,34,101]. However, the

precise locations and altitudes within polar coronal holes where the fast solar wind originates remain unclear.

Coronal holes contain numerous ray-like polar plumes that extend several solar radii ^[102]. Nevertheless, debate persists over whether the fast solar wind originates from the plumes or the interplume regions. Some solar physicists believe that the polar plumes are the main source of material for the fast solar wind ^[103], while others argue that the contribution of the polar plumes is minimal and may even be negligible ^[104]. The observations obtained by the Interface Region Imaging Spectrograph (IRIS) ^[105] and Solar Orbiter have detected ubiquitous small-scale jets (with velocities on the order of 100 km s⁻¹) within coronal holes, which may supply sufficient hot plasma to sustain the solar wind ^[22,24]. A study of the solar wind from PSP revealed a range of wind speeds, with the lower end matching the classical Parker solar wind and the upper end consistent with the measurements of the jets/jetlets superimposed on the background Parker solar wind ^[21]. This suggests that the jets or jetlets could be key to understanding solar wind generation. However, their precise role in mass and energy transport remains uncertain. Additionally, since most observations are restricted to the ecliptic plane, investigations of these structures suffer from significant observational biases.

Recently, two of Solar Orbiter's remote-sensing instruments, EUVI and SPICE, have provided new insights into the dynamics of the solar atmosphere ^[24,55,106]. However, the existing observations in the ecliptic plane have not been able to adequately constrain the generation and acceleration mechanisms of the solar wind, which remain key unanswered questions in the solar physics. Theoretical models have proposed magnetic reconnection ^[32,107,108] and wave-driven processes ^[96] as potential drivers. Studies suggest both mechanisms could contribute to heating and acceleration ^[29,109], yet their relative importance and interplay are still debated due to the absence of direct observational constraints from polar vantage points. Transverse waves have been detected in solar polar regions, and they are hypothesized to provide a significant energy source for the acceleration of the fast solar wind. By combining the in situ measurements obtained by PSP and Solar Orbiter, Rivera et al. ^[58] computed that the damping and mechanical work performed by the Alfvén waves are sufficient to power the heating and acceleration of the fast solar wind in the inner heliosphere. However since the measurement by PSP was obtained at 13.3 solar radii, it is still unknown what mechanism accelerates the fast solar wind from its source region.

Large polar coronal holes, the primary source regions of the fast solar wind, may host distinct wind generation processes compared to the mid- and low-latitude coronal holes. However, this hypothesis remains untested due to the observational limitations. In-situ measurements near the ecliptic plane typically detect fast wind streams originating from the polar coronal hole boundaries or the mid-/low- latitude coronal holes ^[109]. Magnetic connectivity analyses suggest that the steady fast solar wind from polar coronal holes rarely reaches the detectors in the ecliptic plane. The Ulysses observations revealed that the fast solar wind from the polar hole interiors exhibits remarkable stability, whereas streams from the polar hole boundaries or mid-latitude holes display significant temporal variability, possibly implying distinct origin and acceleration mechanisms ^[40].

2.2.2 Limitations in current research

Backtracking methods are usually employed to locate the source region of the solar wind, which trace solar wind streams measured in-situ by spacecrafts back to their solar surface origins. These methods rely on magnetic field extrapolations or global magnetohydrodynamic (MHD) simulations ^[110]. However, past applications have primarily focused on observations near the ecliptic plane, where interactions between fast and slow solar wind streams introduce significant uncertainties ^[111,112]. Because the slow solar wind often originates near the ecliptic, in-situ spacecraft frequently detect interactions between fast and slow streams, complicating

backtracking efforts. Specifically, the fast solar wind streams overtake and compress the preceding slow streams, forming CIRs. As the heliocentric distance increases, the mix between the fast and slow solar wind becomes even more pronounced ^[113], further obscuring the source region identification.

To unveil the origin and acceleration mechanisms of the fast solar wind, remote-sensing observations of photospheric magnetic fields and coronal emission structures in the polar regions are essential. However, current observations are limited in the ecliptic plane, where the projection effect and other limitations severely degrade measurement accuracy and reliability. The absence of high-precision, continuous, and comprehensive magnetic field observations of the polar regions has forced researchers to extrapolate low-latitude magnetic field measurements to infer polar field properties. This method is heavily reliant on assumptions and prone to systematic errors. For instance, the extrapolated open magnetic flux consistently fall below the values obtained from in-situ heliospheric measurements^[114]. This observational deficiency fundamentally restricts progress in understanding the fast solar wind origin. Additionally, remote-sensing of polar coronal structures from the ecliptic suffers from foreground contamination by mid- and low-latitude emissions and LOS integration effects, obscuring crucial spatial and altitudinal information needed to pinpoint the origin of the fast solar wind.

Prevailing theories link fast solar wind acceleration to either MHD wave dissipation or magnetic reconnection ^[22,24,29,32,96,105,107,108]. However, the absence of direct polar observations and the limitations of oblique ecliptic views hinder systematic detection of MHD waves or reconnection events, preventing conclusive verification of their role in solar wind origin and acceleration. Furthermore, the lack of precise polar photospheric magnetic field measurements limits the reliability of the numerical simulations of the polar dynamics. It also remains unclear whether the empirical relationships derived from the mid- and low-latitude coronal holes are suitable for the fast solar wind originating from the large polar coronal holes.

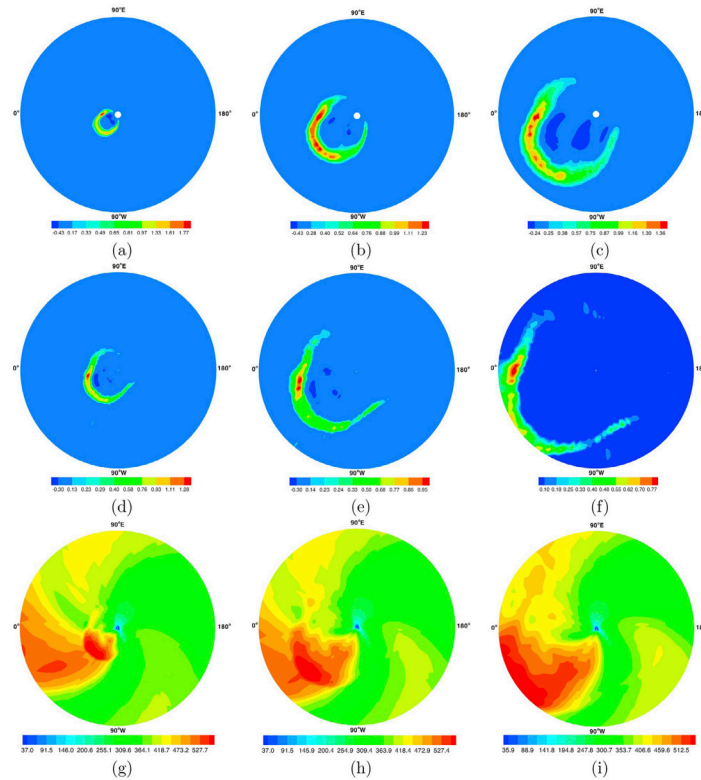


Figure 6: Simulated images of the relative density (in the unit of cm^{-3} , Panels (a) – (f)) and the velocity (in the unit of km s^{-1} , Panels (g) – (i)) during the propagation of a CME in the x-y azimuthal plane at (a) $t = 1$ hour, (b) $t = 3$ hours, (c) $t = 5$ hours, (d and g) $t = 20$ hours, (e and h) $t = 40$ hours, and (f and i) $t = 60$ hours. Panels (a)– (c) show a field of view from $1R_{\odot}$ to $30R_{\odot}$, and Panels (d)–(i) show a field of view up to 1 AU. Figure from Zhou et al. ^[115].

2.2.3 The need for polar observations

Current research on the origin of the fast solar wind primarily relies on observations from near the ecliptic plane. Although the Ulysses mission provided in-situ measurements of the fast solar wind in polar regions, it lacked remote-sensing capabilities to directly image its source regions and ceased operations in 2009. Direct remote-sensing and in-situ measurements of the Sun's polar regions from high heliolatitudes are imperative for pinpointing the source regions of the fast solar wind and determining the acceleration mechanisms. Such observations would resolve critical uncertainties of the dynamics in the coronal hole, refine solar wind models, and enhance our understanding of the Sun's open magnetic flux and its heliospheric impact.

Key advancements of the observations from polar vantage points:

1) Observations of the fast solar wind from high heliolatitude viewpoints would circumvent the complications of fast-slow stream interactions, significantly enhancing the accuracy of backtracking the fast streams to their source regions.

2) Direct imaging observations of the Sun's poles from high latitudes would eliminate the projection effect, providing comprehensive and accurate measurements of the spatiotemporal evolution of the magnetic fields, the velocity fields, and the emission structures within polar coronal holes. This would allow for a precise characterization of source region properties and the driving mechanisms behind the fast solar wind. By quantifying the roles of the MHD waves and the magnetic reconnection, these observations would enable comparisons with the solar wind originated in the mid- and low-latitude coronal holes, revealing potential differences in their driving mechanisms.

2.3 How Do the Space Weather Processes Globally Originate and Propagate Throughout the Solar System?

2.3.1 Key unresolved issues regarding the global space weather processes

Heliospheric space weather refers to the disturbances in the heliospheric environment caused by the solar wind and the solar eruptive activities. Extreme space weather events, such as large solar flares and CMEs (see Figure 6) ^[115,116], can significantly trigger space environmental disturbances such as severe geomagnetic storms, ionospheric storms, and changes in atmospheric density, as well as spectacular aurora phenomena, posing a serious threat to the safety of high-tech activities of human beings. Thus developing effective methods to predict the space weather events, and further mitigate or prevent these impacts is of great importance. However, the generation and propagation of the space weather events involve complex physical processes spanning multiple orders of magnitude in both temporal and spatial scales. The current solar observations obtained in the ecliptic plane are insufficient to comprehensively monitor these phenomena across such vast scales, limiting our ability to 1) map the three-dimensional (3D) structure of the solar wind disturbances, and understand their 3D propagation and the evolution through the heliosphere, and 2) obtain the 3D distributions of the energetic particles and magnetic fields in the heliosphere.

The global structure of the solar wind is determined by both the internal solar processes and the atmospheric dynamics. The propagation and evolution of the solar wind disturbances involve complex physical mechanisms, many of which remain poorly understood. The developments of solar wind models have evolved from simple analytical frameworks to sophisticated numerical simulations, with 3D MHD models serving as essential tools. These models rely on the photospheric magnetic fields as boundary conditions to simulate 3D structures and evolutions of the solar wind disturbances. However, the missing magnetic fields in the polar regions result in significant uncertainties in synoptic magnetic maps, which introduce errors in coronal models, ultimately reduce the accuracy of the solar wind and CME predictions.

Transient events like CMEs significantly alter the global distribution of the solar plasma and

magnetic fields. Their high-density plasma and strong magnetic fields inject substantial mass and energy into interplanetary space, causing heliospheric disturbances. Current forecasting relies on remote-sensing observations of the activities and in-situ measurements of eruptive events near the ecliptic plane. However, these approaches lack global coverage of key processes, including solar atmospheric dynamics, CME initiation, and interplanetary propagation. Addressing these observational gaps is critical for improving space weather forecasting and understanding the global impact of solar eruptions on the heliosphere.

2.3.2 Limitations in current research

Heliospheric space weather forecasting focuses on key phenomena, such as solar wind, CIRs, CMEs, solar energetic particle (SEP) events, and their planetary impacts. Monitoring and modeling the solar wind in interplanetary space are crucial to predict various space weather events. CIRs, for example, play a critical role in solar wind dynamics. Coordinated in-situ measurements from the Solar Terrestrial Relations Observatory (STEREO)^[117] and ACE spacecraft have allowed for tracking CIR propagation and evolution within the ecliptic plane over multiple days. However, the lack of multi-angle observations, particularly from out-of-ecliptic vantage points, limits the accurate reconstruction of their 3D structure and dynamics. CIRs may exhibit entirely different morphologies when observed from different heliolatitude viewpoints. Direct imaging observations out of the ecliptic plane could easily identify the spiral morphology of CIRs and detect multiple coexisting CIRs. This enables the continuous tracing of an interplanetary CIR back to its coronal source^[118].

Previous observations have shown that CMEs do not always follow a straight trajectory through the corona and inner heliosphere but instead often undergo deflected propagation^[119]. Therefore, determining the propagation trajectory of a CME within the ecliptic plane is crucial for determining whether and when the CME will hit the Earth. Most solar wind monitors, such as those at the Sun-Earth L1 point, cannot resolve the 3D structure of CMEs. While STEREO provides multi-perspective imaging, its ecliptic orbit limits observations of longitudinal CME deflections, morphological changes, and velocity evolution. White-light imaging observations from high heliolatitude viewpoints would allow for continuous CME tracking from its coronal initiation, enabling the determination of its propagation speed and longitudinal span^[120]. In addition, multi-perspective observations are essential for 3D localization and reconstruction, and reducing fitting errors^[121].

The accuracy of the CME simulations is also strongly influenced by the background solar wind conditions^[122,123]. The lack of knowledge about polar magnetic fields significantly compromises global MHD models, as incomplete boundary conditions degrade their ability to simulate both the steady-state solar wind and the CME evolution.

Solar energetic particle (SEP) events pose serious space weather risks, yet their study is hindered by insufficient stereoscopic monitoring of their source regions and the shock parameters. CME speed is strongly correlated with SEP event likelihood^[124], but current observations lack continuous, multi-angle tracking of the CME initiation and propagation. Furthermore, the absence of knowledge about the magnetic fields in the polar regions limits the shock modeling, reducing our ability to accurately study shock-driven particle acceleration.

2.3.3 The need for polar observations

Currently, heliospheric observations are largely limited to the ecliptic plane, preventing a full 3D characterization of CMEs, shocks, and SEP events. This restriction undermines the forecasting accuracy for space weather impacts on Earth and other planets. Ground-based and ecliptic-focused space-based observations fail to resolve solar polar dynamics, while incomplete polar magnetic field data further degrade global MHD models by introducing boundary condition uncertainties. These limitations severely restrict the advancements in the heliospheric simulations and space weather prediction, highlighting the need for high-latitude observations

to improve our understanding of the Sun's influence on the heliosphere.

A mission to explore the Sun's poles from high heliolatitudes, combined with observations obtained in the ecliptic plane, would provide unprecedented stereoscopic information on the solar wind disturbances and their 3D propagation. These synergistic observations would enable the development of data-driven, time-dependent 3D MHD models with comprehensive boundary conditions, validated through multi-wavelength remote-sensing and in-situ measurements. Such models could unveil the global structure of the solar plasma and the magnetic fields, enabling a quantitative mapping of the solar wind disturbances and their 3D evolution and propagation throughout the heliosphere.

Key advancements of the observations from polar vantage points:

1) Observations from high heliolatitude viewpoints, combined with the observations obtained in the ecliptic plane, are capable of providing complete and accurate boundary conditions for the global simulations of the 3D evolution and propagation of solar wind disturbances and CMEs throughout the heliosphere.

2) Multi-angle views of the EUV and X-ray imaging observations of the CME initiation, combined with coronagraphic tracking, would better constrain CME models and their propagation.

3) Remote-sensing observations and in-situ measurements of the solar wind and CMEs from polar vantage points would provide more complete constraints and thus enhance model accuracy, particularly for the high-latitude solar wind dynamics.

4) Coordinated monitoring of the solar eruptions across latitudes would advance understanding of particle acceleration and diffusion mechanisms.

3 Proposed Missions to Explore the Sun's Poles

While the Solar Orbiter mission progresses and ventures to higher solar latitudes, the maximum heliolatitude that the Solar Orbiter can reach is only 34° . That said, we still cannot have enough details to understand the role that the polar regions play in the origin of the solar cycle, the generation of the fast solar wind, and propagation of the space weather process.

Recognizing the critical need for the observations of the Sun's poles from high heliolatitude viewpoints to address the scientific questions discussed in Section 3, several mission concepts have been proposed, including: the Solar Polar Imager (SPI)^[125,126], the POLAR investigation of the Sun (POLARIS)^[127], the Solar Polar Orbit Telescope (SPORT)^[128,129], the Solaris mission^[130], the High Inclination Solar Mission (HISM)^[131], and SPO etc.

SPI was proposed to utilize a solar sail propulsion to reach a 0.48 AU circular orbit with an inclination of 75° , enabling high latitude observations of the solar poles^[126]. The mission planned to carry five remote-sensing instruments and three in-situ instruments to study the connections between the Sun, the solar wind, and the solar energetic particles.

The POLARIS mission was proposed to use a combination of a gravity assist and solar sail propulsion to place a spacecraft in a 0.48 AU circular orbit around the Sun with an inclination of 75° ^[127]. The mission aimed to advance understanding of the solar cycle, the 3D structure below the surface, the solar wind, and the acceleration and transportation of the solar energetic particles, using five remote-sensing instruments and four in-situ instruments.

The SPORT mission was first proposed in 2004^[128] and then was selected for intensive scientific and engineering background studies under the Chinese Space Science Strategic Pioneer Project since 2011^[129]. It was designed to reach an orbital inclination of no less than 60° through multiple gravity assists from Jupiter and Earth (or Venus). The mission planned to carry multiple remote-sensing and in-situ instruments, with scientific objectives 1) to reveal the physical processes of the CME propagation and evolution in the inner heliosphere, 2) to uncover the relationships between high-latitude solar magnetic activity, solar eruptive phenomena, and the solar activity cycle, 3) to understand the acceleration, transport, and distribution of energetic particles in the corona and heliosphere, and 4) to unveil the origin and physical characteristics of the fast solar wind. After completing the scientific and engineering background studies, although SPORT did not advance to the satellite engineering phase, its research laid the foundation for several subsequent satellite missions.

The Solaris mission was proposed to use a Jupiter Gravity Assist (JGA) to raise the inclination of the orbit to 75° , followed by multiple Venus Gravity Assists (VGAs) to gradually reduce its orbit's aphelion. The mission planned to carry three remote-sensing instruments: the Compact Doppler Magnetograph (CDM), the EUV Imager (S-EUVI) and the White Light Coronagraph (S-COR), and three in-situ instruments: the Magnetometer (MAG), the Ion-Electron Spectrometer (IES), and the Fast Imaging Plasma Spectrometer (FIPS)^[130]. Solaris received a NASA Phase A support for concept study in 2020, but was not selected for flight in 2022.

The HISM mission concept is largely based on SPI, employing the solar sail techniques. It is designed to take approximately 2.6 years to venture to a 0.48 AU ecliptic orbit, after which it will increase the orbital inclination at a rate of around 10° per year^[131]. Ultimately HISM will reach a heliographic inclination larger than 75° . The mission plans to carry two remote-sensing instruments and five in-situ instruments to study the solar wind and space weather processes.

SPO was proposed with the aim to directly image the polar regions of the Sun and the

ecliptic plane via an orbit with a large inclination angle. Its primary scientific objectives are the breakthrough on the top-level scientific questions discussed in Section 3, including: unveiling the origin of the solar cycle, determining the generation mechanism of the fast solar wind, and characterizing the global origin as well as the heliospheric propagation of space weather processes.

These proposed missions highlight the growing recognition of the importance of solar polar observations. They aim to bridge the observational gap left by ecliptic-based missions, providing critical insights into the solar magnetic cycle, the solar wind origin, and the space weather prediction.

4 The SPO Mission

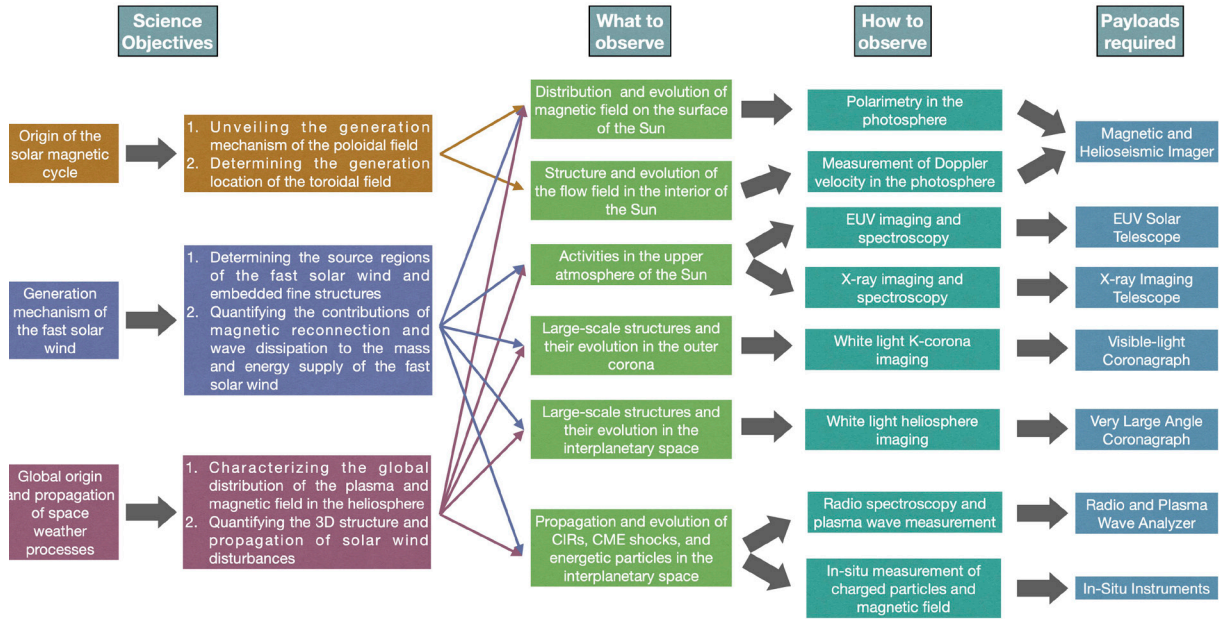


Figure 7: The scientific goals of the SPO mission and the corresponding payload requirements. The SPO mission is scheduled to be launched in 2029. Using a JGA, it is capable of reaching a maximum heliolatitude of $\sim 75^\circ$ (with up to 80° in an extended mission) to capture images of the Sun's poles. After several Earth gravitational assists, SPO will reach an orbit with a period of approximate 1.5 years and a perihelion of approximately 1 AU. Designed for a 15-year operational lifetime (including an extended mission), SPO will observe both solar maximum and minimum, covering a complete solar cycle.

SPO will complement ongoing solar missions, i.e. the STEREO Mission, the Hinode satellite, the Solar Dynamics Observatory (SDO) ^[132], IRIS, the Advanced Space-based Solar Observatory (ASO-S) ^[133], the Solar Orbiter, the Aditya-L1 mission ^[134], the PUNCH mission ^[135], as well as the upcoming L5 missions (e.g., ESA's Vigil mission ^[136]). By integrating observations from these missions, SPO will significantly contribute to an unprecedented “ 4π -observation” of the Sun.

In order to achieve its scientific goals, SPO will carry six remote-sensing instruments and four in-situ instruments to measure the vector magnetic fields and Doppler velocity fields, to observe the Sun in EUV, X-ray, and radio wave bands, to image the corona and the heliosphere up to $45 R_\odot$, and to perform in-situ measurements of the magnetic field, and low- and high-energy particles in the solar wind.

A summary of the scientific goals of the SPO mission and the corresponding payload requirements is provided in Figure 7. The following subsections outline the capabilities of each instrument and how they will address the scientific questions discussed in Section 3.

4.1 The Magnetic and Helioseismic Imager (MHI)

The Magnetic and Helioseismic Imager (MHI) is designed to measure the magnetic fields and the Doppler velocities in the photosphere. By providing imaging observations from a polar vantage point, MHI will fill the gap in the magnetic and velocity field observations of the polar regions, which is essential for all three scientific objectives of the SPO mission.

Table 1: Observational requirements for MHI.

Parameters		Specifications
Telescope	Spectral line	Fe I 5324 Å
	FOV	34'
	Spatial Res.	2"
Longitudinal Magnetic field	Cadence	60 s
	Sensitivity	20 G
Vector Magnetic field	Cadence	12 min
	Sensitivity	200 G
Doppler Velocity	Cadence	60 s
	Sensitivity	100 m s ⁻¹

To answer the scientific question of how the solar dynamo works and drives the solar cycle, two key aspects must be addressed: 1) pinpointing the location where the toroidal magnetic field is formed, and 2) determining the primary mechanism behind the generation of the poloidal field. The measurements of the magnetic and velocity fields are crucial to address these questions. The measurements of the magnetic fields on the entire solar disk including the polar regions, active regions, and the network magnetic fields are essential for understanding the generation mechanism of the poloidal field. Additionally, measuring velocity fields in the polar regions enables helioseismic inversions to map solar interior flow fields, which is key to determine the location of the toroidal magnetic field generation.

To ensure high-accuracy flow field measurements, the noise from (super)granulation must be minimized. Since polar regions may contain fewer super granules than low-latitude regions, long-duration observations are required to average out supergranulation signals^[137]. For precise magnetic field measurements, MHI must resolve the network magnetic field structure, requiring a spatial resolution better than 2" to distinguish network field structures, a longitudinal magnetic field sensitivity below 20 G to detect weak network fields, and a transverse magnetic field sensitivity below 200 G to detect strong horizontal field structures within the network.

MHI also contributes to the second scientific objective of the SPO mission, i.e. determining the origin of the fast solar wind. The debate over whether the fast solar wind originates from the polar plumes or the interplume regions^[102,103] remains unresolved. A common method for localize the source region of the solar wind involves global magnetic field extrapolation^[138]. However, the absence of accurate measurements of the polar magnetic fields lead to significant uncertainties in both the magnetic field extrapolations and the global data-driven MHD simulations. MHI will provide high-accuracy vector magnetic field measurements in the polar regions, overcoming these limitations. When combined with ecliptic plane observations, it will enable the construction of high-resolution global synoptic magnetic field maps, which serve as the boundary conditions for solar wind tracing, and the key inputs for numerical simulations of the solar wind and CME propagation throughout the heliosphere, which is also essential for the third scientific objective of the SPO mission, i.e. characterizing the global origin as well as the heliospheric propagation of space weather processes. The observation requirements for MHI to achieve these scientific goals are summarized in Table 1.

4.2 The Extreme Ultraviolet Telescope (EUT)

The Extreme Ultraviolet Telescope (EUT), consisting of the Multi-band EUV Imager (MEI) and the Full-disk Integrated Spectrograph (FIS), will provide crucial information to address the second and third scientific objectives of the SPO mission. Ideally, an EUV slit spectrograph capable of measuring LOS and turbulent velocities in the transition region and corona would be included. However, due to resource limitations on this deep-space mission and technological difficulty in the mission team, a slit spectrograph is currently not onboard. Nevertheless, MEI and FIS still will significantly enhance our understanding of the fast solar wind and global space weather processes in the heliosphere.

MEI provides high-resolution images of the fine structures and their rapid evolution in coronal holes, including coronal bright points, jets, spicules, plumes, and interplume structures, which are the potential source regions of the fast solar wind. Observing these structures from a high heliolatitude is essential for identifying the origin site (location, height) of the fast solar wind, and determining the role of magnetic reconnection and MHD wave dissipation in supplying mass and energy to the fast solar wind.

Table 2: Observational requirements for EUT.

Parameters	MEI	FIS
FOV	$\geq 48'$	$\geq 40'$
Spatial Res.	$\leq 2''$	-
Detector size	$\geq 4k \times 4k$	$2k \times 1$
Wavelength	17.1, 19.3, 30.4 nm (± 0.1 nm)	18.3-31.3 nm, 49.6-52.9 nm
Band width	≤ 0.7 nm @17.1 nm, ≤ 0.8 nm @19.3 nm	≤ 0.04 nm @20 nm,
/Spectral Res.	≤ 1.5 nm @30.4 nm	≤ 0.1 nm @50 nm
Cadence	≤ 1 min	≤ 5 min

MEI also contributes to the third scientific objective by monitoring the origin, evolution, and early propagation of the solar eruptions, providing critical constraints for the 3D evolution and propagation of the CMEs in the heliosphere. This is essential for establishing global numerical simulations of the solar wind disturbances and improving the prediction of space weather events.

FIS is designed to characterize the latitudinal distribution of solar EUV radiation and coronal physical properties. It is also able to detect the LOS velocities of CMEs during their early propagation^[139,140], providing essential constraints for the global space weather process modeling, and improving the CME propagation predictions and its impact on Earth and other planets. Additionally, FIS is able to provide unique reference for explorations of stellar atmospheres and their eruptions, as solar observations at different phases of SPO's orbit are basically similar to observations of stars with different orientations of their rotation axes.

The field of view (FOV) of MEI should be at least $48'$, enabling observations of the entire solar disk and atmospheric structures within $0.5 R_{\odot}$ beyond the solar limb, covering typical energy release heights of solar eruptions. The selected wavelength bands include 17.1 nm (9×10^5 K), 19.3 nm (1.6×10^6 K), and 30.4 nm (5×10^4 K) to cover a temperature range of 104 – 106 K (from the chromosphere to the corona). The spatial resolution of MEI should be better than $2''$, and the temporal resolution should be one minute, meeting the observational requirements for EUV emission structures such as network structures, polar plumes, coronal bright points, jets, and filaments.

The 18.3–21.3 nm and 49.6–52.9 nm bands are adopted by FIS to cover a temperature range from 105 K to 2×10^6 K, the typical temperature range of coronal and CME plasma. Moreover,

the Fe VIII-XIV lines in these wavelength bands can be used for temperature diagnostics, and the lines of the Fe XII at 19.512 and 18.688 nm can be used for density diagnostics. The line of the O III at 52.6 nm is suitable for the velocity measurements of prominences/CMEs ^[139,141]. The spectral resolution might need to be better than 500 ^[140], i.e. better than 0.04 nm at 20 nm, and 0.1 nm at 50 nm, to achieve enough accuracy of the LOS velocity measurement. The FOV of at least 40' is required to cover major EUV structures extending beyond the solar limb (typically within 1.25 R_⊙). A detailed summary of the observational requirements for MEI and FIS is provided in Table 2.

4.3 VISible-light CORonagraph (VISCOR)

The VISible Light CORonagraph (VISCOR) is designed to image the white-light corona up to 6.0 R_⊙, capturing its polarization and contributing to the second and third scientific objectives of the SPO mission.

VISCOR will provide high-resolution imaging observations of the coronal structures such as the plumes, interplume regions, switchbacks, and streamers from viewing vantage points out of the ecliptic plane, offering crucial insights into the origin and acceleration of the fast solar wind ^[142–145]. Additionally, VISCOR will also help to constrain the 3D global models, enabling the solar wind tracing back to its source regions and quantifying wind super-radial expansion.

Moreover, the observations from high heliolatitudes provide a better view of the propagation and evolution of the CMEs in the ecliptic plane, particularly the Earth-directed CMEs, which might not be visible from other vantage points. Therefore, VISCOR helps to improve the prediction of the space weather in the solar system, i.e. the third scientific objective of SPO. Furthermore, by combining with the observations obtained in the ecliptic plane, it is capable of constraining the 3D structures of the CMEs and their associated shocks, allowing for better determination of the CME front, core, and shock positions, enhancing our understanding of the CME evolution and the ability to model and predict CME paths and the impacts on the solar system environment.

Table 3: Observational requirements for VISCOR.

Parameters	Specifications
Waveband	540–640 nm
FOV	0.4° – 1.6° (corresponding to 2.2–6.0 R _⊙ @1 AU)
Spectral Res.	≤ 12" or 5.8"/pixel
Linear polarizer positions	0°, ±60°
Time cadence	≤ 6 min (CME mode ≤ 3 min) Specific ~30 s Obs. for short period
Stray-light level	≤ 1 × 10 ⁻¹¹ MSB @6 R _⊙

VISCOR is a classical externally occulted coronagraph, similar to SOHO/LASCO-C2 ^[146], but with a larger aperture, higher quantum efficiency, and higher cadence. The FOV ranges from 0.4° to 1.6° (corresponding to 2.2 R_⊙ to 6.0 R_⊙ at 1 AU) with respect to the disk center, which is necessary for imaging the corona, and tracking the acceleration and propagation of the solar wind and the CMEs. The goal of the VISCOR stray-light level is expected to be better than 1 × 10⁻¹¹ MSB at 6 R_⊙, enabling the detection of weak coronal features like faint plumes or shocks far from the solar disk. The spatial resolution should be better than 20" to resolve the plume and inter-plume regions, the streamers, the switchbacks, and the CME-related structures. The regular time cadence for the solar wind observations should be less than 6 min,

with the capacities of high cadence modes of 30 sec for the coronal density fluctuations, 1 min for the switchbacks, and 3 min for the CME observations, which are vital for detecting coronal dynamics and tracking fast-evolving CMEs. A detailed summary of the observational requirements for VISCOR is provided in Table 3.

4.4 The Very Large Angle CORonagraph (VLACOR)

As a complement to VISCOR, the Very Large Angle CORonagraph (VLACOR) is designed to observe the heliosphere with a larger FOV to effectively image the large-scale structures and transients in the solar wind and to track the propagations of CMEs and their corresponding shocks, which are crucial for the second and third scientific objectives of the SPO mission.

Table 4: Observational requirements for VLACOR.

Parameters	Specifications
Aperture	12 mm
FOV (Half angle)	$1.33^\circ - 12^\circ$
	$5-45R_\odot @1\text{AU}$
Pixel Res.	$45''/\text{pixel}$
Image array	$2\text{k} \times 2\text{k}, 14\text{bit A/D}$
Spectral bandpass	600-750 nm
Cadence	Brightness: 15 min
Stray light	$\leq 7 \times 10^{-10} \text{ MSB}@5R_\odot$
	$\leq 1 \times 10^{-12} \text{ MSB}@45R_\odot$

Large-scale structures such as solar wind, coronal streamers and CMEs can extend across several solar radii. As the solar wind evolves, it undergoes acceleration from subsonic to supersonic speeds. In the inner heliosphere beyond $10 R_\odot$, the solar wind continues to accelerate^[147], but the acceleration mechanisms remain debatable. Moreover, forward modeling of the Thomson scattering of 3D MHD solar wind simulations reveals that coronal and interplanetary structures and transients, such as CIRs and CMEs, exhibit distinct morphologies when viewed from a high-latitude vantage point^[120]. White-light imaging observations outside the ecliptic plane at a latitude exceeding 60° can clearly identify the spiral morphology of CIRs and detect multiple coexisting CIRs. This enables the continuous tracing of an interplanetary CIR back to its source region^[118]. Observing the evolution of these structures from the lower corona to the heliosphere will provide key insights into the origin and the acceleration mechanisms of the fast solar wind, directly addressing the second objective of the SPO mission.

In addition, the white-light imaging observations of the heliosphere outside the ecliptic plane are capable of monitoring the CME propagation in the ecliptic plane from its coronal initiation, and then deriving its propagating speed and longitudinal span^[120]. Previous observations have shown that CMEs may not propagate along a straight trajectory through the corona and inner heliosphere, but undergo deflected propagation^[119]. Identifying the precise propagation trajectory of a CME within the ecliptic plane is essential for predicting whether and when the CME will impact Earth. Additionally, directly imaging solar wind structures and transients from a polar vantage point provides critical constraints for data-driven global heliospheric models, improving space weather prediction accuracy.

The inner edge of the FOV of VLACOR is proposed to be $5 R_\odot @1 \text{ AU}$, with an overlap of the FOV of VISCOR, which reaches $6 R_\odot$ when the SPO spacecraft is 1 AU from the Sun. The outer FOV of VLACOR is designed to be as larger as possible within the limitation that a single instrument can reach, i.e. accordingly, $45 R_\odot @1 \text{ AU}$. By combining VISCOR and VLACOR, SPO will provide comprehensive white-light observations, covering the primary regions where the fast solar wind is accelerated. Additionally, these observations will encompass the full acceleration phase of the CMEs, ensuring continuous tracking of their evolution. A detailed summary of the observational requirements for VLACOR is provided in Table 4.

4.5 The X-ray Imaging Telescope (XIT)

The X-ray Imaging Telescope (XIT) is designed to observe solar X-ray bursts and small-scale activities in the polar regions and coronal holes. Its scientific objectives are 1) to investigate the small-scale activities in the source regions of the fast solar wind, and 2) to study the energy release and the Hard X-Ray (HXR) directivity in solar X-ray bursts, which are closely related to the second and third objectives of the SPO mission, respectively. XIT consists of two instruments, an X-ray imager and a soft X-ray spectrometer. These instruments can record full-disk light curves, spectra, and images of solar X-ray bursts in the energy range of 4–100 keV, as well as the soft X-ray spectra in 0.5–10 keV, within a fixed, small FOV limited to about 5 arcmin. The main specifications of XIT are listed in Table 5.

Table 5: Observational requirements for XIT.

Parameters	HXR	SXR
Telescope	4-100 keV spectra and images	0.5-10 keV spectra
FOV	45'	4' – 6'
Spatial Res.	Better than 7" (6.2")	-
Energy Res.	4 keV @59.5 keV	0.3 keV @6 keV
Time Res.	4 s, burst 1 s (0.25-2 s)	8 s (4-20 s)
Pointing Accuracy	Better than 2"	-
Data Size	0.28-0.47 GB/d	0.021 GB/d
Size	1000 mm×300 mm×400 mm	
Mass	10 kg	

The solar X-ray bursts, direct products of energy release in solar flares, are widely used to study plasma heating and energetic electrons ^[148–151]. The low-energy X-rays from the Sun are mostly emitted by the thermal plasma at temperatures ranging from a few to tens of MK. In contrast, at energies above ~20 keV, X-ray emissions primarily result from the accelerated electrons interacting with ambient plasma. By analyzing the X-ray spectra and images, key parameters of the thermal and non-thermal electrons can be obtained, which are essential for understanding solar atmospheric dynamics during flares and constraining the global models of the solar eruptive events. More importantly, by combining XIT observations with other X-ray instruments positioned at different viewing angles, we can explore the 3D properties of the X-ray sources, the directivity of the solar X-rays ^[152], and the pitch-angle distribution of the energetic electrons. To achieve these goals, the FOV should be larger than 45' to cover the low corona, where the X-ray coronal sources are often found. The energy range should cover 4–100 keV to include thermal and non-thermal emissions. The time resolution should be better than 2 s to observe the typical variations of the flare HXR. To resolve the typical flare loops and double foot points, the spatial resolution should be better than 8". The spectral resolution should be better than 4 keV @59.5 keV for the HXR spectral analysis.

On the other hand, XIT can also help identify possible sources of the fast solar wind by observing soft X-ray emissions from the small-scale activities in the quiet Sun, the polar regions, and the coronal holes, including X-ray bright points and small-scale jets, whose X-ray signals have been observed and studied ^[153,154]. Although the imaging and imaging spectroscopy of these activities in Soft X-Ray (SXR) would be highly beneficial, the very limited resources on the deep space platform of SPO prevent the inclusion a full imager. Instead, XIT focuses on obtaining SXR spectra, which provide key plasma diagnostics, including temperature, emission

measure, and elemental abundances. Due to the relatively weak SXR emissions from these small-scale activities, an entrance window is implemented to restrict the FOV to a few arcminutes, minimizing contamination from other solar regions. The energy range of SXR spectra should cover 0.5–10 keV, encompassing the thermal continuum and most of the emission lines. The energy resolution should be better than 0.5 keV @6 keV for quantitatively analysis of the spectra. Since the typical lifetimes of coronal bright points are in the range of minutes to tens of hours ^[155–158], the time cadence of SXR spectra should be better than 30s.

4.6 The Radio and Plasma Wave Analyzer (RPWA)

The Radio and Plasma Wave Analyzer (RPWA) consists of two components, the Radio Wave Analyzer and the Plasma Wave Analyzer, and is designed to detect the solar radio emissions at low frequency range up to 30 MHz and to measure the local plasma waves. The Radio Wave Analyzer aims to detect the spectrum, time-variation and direction of the solar radio bursts. It will measure the time-variation, amplitude and phase of the radio waves from multiple directions in space. The Plasma Wave Analyzer performs in-situ measurements of both the electric and magnetic fields to discriminate different kinds of local plasma waves. The main specifications of RPWA are listed in Table 6.

RPWA plays a crucial role in addressing key objectives of the SPO mission, particularly in unveiling the origin of the fast solar wind. The detection of Type III bursts and solitary wave emissions from high solar latitudes and polar regions will provide essential evidence for this investigation. In addition, in the relatively tranquil solar wind, the highly turbulent corona and the solar wind are prone generate solitary wave radiation, which Parker Solar Probe (PSP) observations suggest originates in the solar wind acceleration region. Their dynamic spectrum will offer an important insight into the solar wind acceleration mechanism. The Plasma Wave Analyzer will measure the solar wind above the polar regions, offering crucial observational clues to distinguish the contributions of the magnetic reconnection and the wave turbulence in driving the fast solar wind. This will help quantify their respective roles in supplying mass and energy to the solar wind, providing fundamental insights into its origin.

Table 6: Observational requirements for RPWA.

Instrument components	Parameters	Specifications
Radio Wave Analyzer	Frequency	10 kHz-30 MHz
	Antenna	≥7.5 m, tripole
	Spectral Res.	<5% f_c
	Temporal Res.	≤1 s
	Dynamic range	≥80 dB
	Sensitivity	≤10nV/: 10 kHz-30 MHz
Plasma Wave Analyzer	Frequency	10 kHz-50 MHz
	Dynamic range	E:≥120dB
		B:2 kHz: 20 fT/Hz ^{1/2}
	Sensitivity	2 kHz: ±2.0 nT
Mass		≤16 kg
Power		≤35 W

Additionally, the observations of Type II and Type III radio bursts will yield valuable clues on the energy release mechanisms in eruptive events, particle acceleration processes, the dynamic parameters of the solar wind, non-thermal high-energy particle flux characteristics, and the

evolution of the CMEs and the interplanetary shocks.

For the first time, based on the solar Type II and Type III observations of the polar regions, RPWA will also provide diagnostic results of heliospheric plasma structures and densities above the polar regions. By integrating these results with the observations obtained by other instruments in the ecliptic plane, RPWA will help construct the global 3D structure of the heliospheric magnetic field. This will, in turn, offer critical model parameters essential for understanding space weather processes in the solar system.

4.7 The In-Situ Instrument Package

The in-situ instrument package consists of four instruments, including the Solar Wind Ion Mass Spectrometer (SWIMS), the Solar Wind Ion Retarding Potential Analyzer (SWIRPA), the Solar Energetic Particle Analyzer (SEPA), and the Magnetometer (MAG). This suite of instruments is primarily designed to measure and analyze key physical parameters of the solar wind, heliospheric energetic particles, and interplanetary magnetic fields. These measurements provide a comprehensive understanding of the states and evolution of solar wind, energetic particles, and magnetic fields across various latitudes, as well as insights into the impact of solar activities on space weather throughout the solar system.

Table 7: Observational requirements for the in-situ Package.

Instruments	Parameters	Specifications
SWIMS	Composition	Ions: H, ⁴ He, ³ He, C, N, O, Mg, Ne, Si, Fe
	Energy range	0.2~80 keV/e
	Energy Res.	<10%
	Mass Res.	(M/q)/Δ(M/q)≥30 @10 keV/e
	FOV	360° × (±45° @10 keV/e) boresight of ±45° points to the Sun
	Angle Res.	7.5° × 6°
	Geometric factor	1 × 10 ⁻⁵ cm ² sr eV/eV
	Time Res.	4 s (high time resolution mode)
		30 s (medium time resolution mode)
		300 s (low time resolution mode)
SWIRPA	Composition	Ions: H, ⁴ He
	Energy range	0.1~8 keV/e
	Energy Res.	<10%
	FOV	90° cone toward Sun
	Angle Res.	10°
	Geometric factor	10 cm ² sr
	Time Res.	Same as SWIMS

SEPA	Composition	Electrons and ions (H, ^4He , C/N/O group, elements heavier than O)
	Energy Ranges	Electrons: 30 keV~5 MeV
		Protons: 60 keV~100 MeV
		Heavy ions: 12~100 MeV/n (Related to ion types)
	Energy Res.	<20% @ 200 keV (electrons & protons)
	Mass Res.	Ions (H, ^4He , C/N/O, >O)
	FOV	Medium-Energy electrons & High-Energy particles: 2 units
		Medium-Energy Protons: 2 units
	Directional Res.	Medium-Energy electrons & High-Energy particles: 50°/per direction
		Medium-Energy Protons: 50°/per direction
MAG	Geometric factor	>0.5 cm ² sr
	Time Res.	Same as SWIMS
	Measurement	± 128 nT, ± 64000 nT
	Frequency range	DC~10 Hz
	Sample rate	40 Hz
	Accuracy	better than 0.2 nT (± 128 nT range)
	Noise	<0.01 nT/ @1 Hz

By combining the interplanetary magnetic field data from MAG with photospheric magnetic field data from the remote-sensing instrument MHI, the package can help trace the origin of the interplanetary fast solar wind. Using methods such as the Parker spiral or global MHD models, it is possible to determine the source region of the fast solar wind in the polar coronal holes. Additionally, the in-situ measurement of interplanetary magnetic flux is essential for addressing the open magnetic flux problem. While the structure of the fast solar wind is less complex than that of the slow solar wind, it is not entirely uniform and may exhibit structural features originating from the Sun. Detailed in-situ measurements of these features by SWIMS, SWIRPA, SEPA, and MAG will enable the identification of the mechanisms responsible for the generation of the fast solar wind.

Beyond providing insights into the origin of the fast solar wind, the in-situ measurements are critical for understanding the plasma composition and magnetic field topology of interplanetary coronal mass ejections (ICMEs). This knowledge is vital for studying the propagation and evolution of CMEs/ICMEs in the heliosphere and their potential impacts on the Earth. Additionally, shocks driven by CMEs/ICMEs play a crucial role in accelerating particles to high energies, which can damage satellite hardware and disrupt radio communications. In-situ detection of these energetic particles is therefore essential to understanding how shocks accelerate particles and how these particles propagate through the heliosphere.

Given that the typical interplanetary magnetic field strength is around 6 nT at 1 AU and 0.3 nT at 5 AU, the MAG instrument must have an accuracy better than 0.2 nT to measure the weak interplanetary magnetic field around the SPO orbit. Furthermore, a time resolution on the order of sub-seconds is necessary to detect rapid magnetic field perturbations. To accurately characterize the fine features of the heliospheric energetic particle spectrum and its variations in response to changes in solar and interplanetary activity, the energy range should span from tens of keV to tens or even hundreds of MeV. The energy resolution (dE/E) of SWIMS, SWIRPA, and SEPA should be better than 20%, with a time resolution on the order of minutes. The detailed observational requirements are summarized in Table 7.

5 Summary

Exploring the Sun and understanding how its activities impact throughout the heliosphere is one of humanity's greatest scientific endeavors. While solar observations have covered nearly the entire electromagnetic spectrum, encompassing X-rays, ultraviolet, optical, infrared, and radio waves, as well as the solar neutrinos, our understanding of the Sun's poles remains limited. Most observations are conducted near the ecliptic plane, restricting detailed studies of these crucial regions. This observation gap raises three key scientific questions: 1) How does the solar dynamo work and drive the solar magnetic cycle? 2) What generates and accelerates the fast solar wind? 3) How do the space weather processes globally originate and propagate throughout the solar system? The most effective way to address these questions is through direct imaging of the Sun's poles and in-situ measurements of plasma and magnetic field from high heliolatitudes.

The SPO mission has been proposed to address these three unanswered scientific questions. Its primary objectives are 1) to unveil the origin of the solar cycle, 2) to determine the generation mechanism behind the fast solar wind, and 3) to characterize the global origin and propagation of space weather processes. Equipped with six remote-sensing instruments and four in-situ instruments, SPO will, for the first time, capture images of the Sun's poles from high heliolatitudes. These groundbreaking observations will provide invaluable insights, revolutionizing our understanding of the Sun and the space weather processes.

Acknowledgments

The forum was sponsored by ISSI-BJ. The financial and logistics support provided by ISSI, ISSI- BJ, and the National Space Science Center, Chinese Academy of Sciences are gratefully acknowledged. L.P.C. gratefully acknowledges funding by the European Union (ERC, ORIGIN, 101039844).

References

- [1] Deng, Y., Zhou, G., Dai, S., et al. Solar Polar-orbit Observatory[J]. *Chinese Science Bulletin*, 2023, 68, 298
- [2] Judge, P. G., The Sun: A Very Short Introduction[M]. Oxford: Oxford Univ. Press, 2020
- [3] Cameron, R., & Schüssler, M., The crucial role of surface magnetic fields for the solar dynamo[J], *Science*, 2015, 347, 1333
- [4] Schatten, K. H., Scherrer, P. H., Svalgaard, L., et al., Using Dynamo Theory to predict the sunspot number during Solar Cycle 21[J]. *Geophys. Res. Lett.*, 1978, 5, 4112,
- [5] Choudhuri, A. R., Chatterjee, P., & Jiang, J., Predicting Solar Cycle 24 With a Solar Dynamo Model[J]. *Phys. Rev. Lett.*, 2007, 98, 131103
- [6] Petrie, G. J. D., & Haislmaier, K. J., Low-latitude Coronal Holes, Decaying Active Regions, and Global Coronal Magnetic Structure[J]. *The Astrophysical Journal*, 2013, 775, 100
- [7] Broussard, R. M., Sheeley, Jr., N. R., Tousey, R., et al., A survey of coronal holes and their solar wind associations throughout sunspot cycle 20[J]. *Sol. Phys.*, 1978, 56, 161
- [8] Babcock, H. W., & Babcock, H. D., The Sun's Magnetic Field, 1952-1954[J]. *The Astrophysical Journal*, 1955, 121, 349
- [9] Deng, Y., Wang, J., & Ai, G., Vector magnetic field in solar polar region[J]. *Science in China A: Mathematics*, 1999, 42, 1096
- [10] Ai, G. X., & Hu, Y. F., Propose for a solar magnetic field telescope and its working theorem[J]. *Publications of the Beijing Astronomical Observatory*, 1986, 8, 1
- [11] Tsuneta, S., Ichimoto, K., Katsukawa, Y., et al., The Solar Optical Telescope for the Hinode Mission: An Overview[J]. *Sol. Phys.*, 2008, 249, 167
- [12] Kosugi, T., Matsuzaki, K., Sakao, T., et al., The Hinode (Solar-B) Mission: An Overview[J]. *Sol. Phys.*, 2007, 243, 3
- [13] Tsuneta, S., Ichimoto, K., Katsukawa, Y., et al., The Magnetic Landscape of the Sun's Polar Region[J]. *The Astrophysical Journal*, 2008, 688, 1374
- [14] Jin, C., & Wang, J., Vector Magnetic Fields of A Solar Polar Region[J]. *The Astrophysical Journal*, 2011, 732, 4
- [15] Jin, C., Zhou, G., Zhang, Y., et al., The Bipolar Magnetic Emergence in the Solar Polar Region[J]. *The Astrophysical Journal*, 2020, 889, L26
- [16] Yang, S., Jiang, J., Wang, Z., et al., Long-term Variation of the Solar Polar Magnetic Fields at Different Latitudes[J]. *Research in Astronomy and Astrophysics*, 2024, 24, 0750153
- [17] Yang, S., Jiang, J., Wang, Z., et al., Meridional Flow in the Solar Polar Caps Revealed by Magnetic Field Observation and Simulation[J]. *The Astrophysical Journal*, 2024, 970, 183
- [18] Jiang, J., Cameron, R. H., & Schüssler, M., Effects of the Scatter in Sunspot Group Tilt Angles on the Large-scale Magnetic Field at the Solar Surface[J]. *The Astrophysical Journal*, 2014, 791, 5
- [19] Raouafi, N. E., & Stenborg, G. *The Astrophysical Journal*, 2014, 787, 118
- [20] Kumar, P., Karpen, J. T., Uritsky, V. M., et al. *The Astrophysical Journal*, 2022, 933, 21
- [21] Raouafi, N. E., Stenborg, G., Seaton, D. B., et al., Role of Transients in the Sustainability of Solar Coronal Plumes[J]. *The Astrophysical Journal*, 2023, 945, 28
- [22] Tian, H., DeLuca, E. E., Cranmer, S. R., et al., Prevalence of small-scale jets from the networks of the solar transition region and chromosphere[J]. *Science*, 2014, 346, 1255711
- [23] Tripathi, D., Nived, V. N., & Solanki, S. K., Coronal Heating and Solar Wind Formation in Quiet Sun and Coronal Holes: A Unified Scenario[J]. *The Astrophysical Journal*, 2021, 908, 28
- [24] Chitta, L. P., Zhukov, A. N., Berghmans, D., et al., Picoflare jets power the solar wind emerging from a coronal hole on the Sun[J]. *Science*, 2023, 381, 867
- [25] Chitta, L. P., Solanki, S. K., del Toro Iniesta, J. C., et al., Fleeting Small-scale Surface Magnetic Fields Build the Quiet-Sun Corona[J]. *The Astrophysical Journal*, 2023, 956, L1
- [26] Cirtain, J. W., Golub, L., Lundquist, L., et al., Evidence for Alfvén Waves in Solar X-ray Jets[J]. *Science*, 2007, 318, 1580
- [27] Tian, H., McIntosh, S. W., Habbal, S. R., et al., Observation of High-speed Outflow on Plume-like Structures of the Quiet Sun and Coronal Holes with Solar Dynamics Observatory/Atmospheric Imaging Assembly[J]. *The Astrophysical Journal*, 2011, 736, 130
- [28] De Pontieu, B., McIntosh, S. W., Carlsson, M., et al., Chromospheric Alfvénic Waves Strong Enough to Power the Solar Wind[J]. *Science*, 2007, 318, 1574
- [29] McIntosh, S. W., de Pontieu, B., Carlsson, M., et al., Alfvénic waves with sufficient energy to power the quiet solar corona and fast solar wind[J]. *Nature*, 2011, 475, 477
- [30] Domingo, V., Fleck, B., & Poland, A. I., The SOHO Mission: an Overview[J]. *Sol. Phys.*, 1995, 162, 1
- [31] Hassler, D. M., Dammasch, I. E., Lemaire, P., et al., Solar Wind Outflow and the Chromospheric Magnetic Network[J]. *Science*, 1999, 283, 810
- [32] Tu, C.-Y., Zhou, C., Marsch, E., et al., Solar Wind Origin in Coronal Funnels[J]. *Science*, 2005, 308, 519
- [33] Tian, H., Harra, L., Baker, D., et al., Upflows in the Upper Solar Atmosphere[J]. *Sol. Phys.*, 2021, 296, 47
- [34] Tian, H., Tu, C., Marsch, E., et al., The Nascent Fast Solar Wind Observed by the EUV Imaging Spectrometer on Board Hinode[J]. *The Astrophysical Journal*, 2010, 709, L88
- [35] Harra, L., Baker, D., Edwards, S. J., et al., A Study of the Coronal Non-thermal Velocity in Polar Regions During the Rise from Solar Minimum to Solar Maximum in Cycle 24[J]. *Sol. Phys.*, 2015, 290, 3203
- [36] Tu, C. Y., Marsch, E., Wilhelm, K., et al., Ion Temperatures in a Solar Polar Coronal Hole Observed by SUMER on

- SOHO[J]. *The Astrophysical Journal*, 1998, 503, 475
- [37] Wenzel, K. P., Marsden, R. G., Page, D. E., et al., The ULYSSES Mission[J]. *Astronomy and Astrophysics Supplement*, 1992, 92, 207
- [38] Müller, D., St. Cyr, O. C., Zouganelis, I., et al., The Solar Orbiter mission. Science overview[J]. *Astronomy and Astrophysics*, 2020, 642, A1
- [39] Temmer, M., Space weather: the solar perspective: An update to Schwenn (2006)[J]. *Living Reviews in Solar Physics*, 2021, 18, 4
- [40] McComas, D. J., Ebert, R. W., Elliott, H. A., et al., Weaker solar wind from the polar coronal holes and the whole Sun[J]. *Geophys. Res. Lett.*, 2008, 35, L18103
- [41] Balogh, A., Gosling, J. T., Jokipii, J. R., et al., The Solar Origin of Corotating Interaction Regions and Their Formation in the Inner Heliosphere[J]. *Space Sci. Rev.*, 1999, 89, 141
- [42] Geiss, J., Gloeckler, G., von Steiger, R., et al., The Southern High-Speed Stream: Results from the SWICS Instrument on Ulysses[J]. *Science*, 1995, 268, 1033
- [43] Wimmer-Schweingruber, R. F., von Steiger, R., & Paerli, R., Solar wind stream interfaces in corotating interaction regions: SWICS/Ulysses results[J]. *J. Geophys. Res.*, 1997, 102, 17407
- [44] Fisk, L. A., & Jokipii, J. R., Mechanisms for Latitudinal Transport of Energetic Particles in the Heliosphere[J]. *Space Sci. Rev.*, 1999, 89, 115
- [45] Rochus, P., Auchère, F., Berghmans, D., et al., The Solar Orbiter EUV instrument: The Extreme Ultraviolet Imager[J]. *Astronomy and Astrophysics*, 2020, 642, A8
- [46] SPICE Consortium, Anderson, M., Appourchaux, T., et al., The Solar Orbiter SPICE instrument. An extreme UV imaging spectrometer[J]. *Astronomy and Astrophysics*, 2020, 642, A14
- [47] Solanki, S. K., del Toro Iniesta, J. C., Woch, J., et al., The Polarimetric and Helioseismic Imager on Solar Orbiter[J]. *Astronomy and Astrophysics*, 2020, 642, A11
- [48] Krucker, S., Hurford, G. J., Grimm, O., et al., The Spectrometer/Telescope for Imaging X-rays (STIX)[J]. *Astronomy and Astrophysics*, 2020, 642, A15
- [49] Antonucci, E., Romoli, M., Andretta, V., et al., Metis: the Solar Orbiter visible light and ultraviolet coronal imager[J]. *Astronomy and Astrophysics*, 2020, 642, A10
- [50] Howard, R. A., Vourlidas, A., Colaninno, R. C., et al., The Solar Orbiter Heliospheric Imager (SoloHI)[J]. *Astronomy and Astrophysics*, 2020, 642, A13
- [51] Owen, C. J., Bruno, R., Livi, S., et al., The Solar Orbiter Solar Wind Analyser (SWA) suite[J]. *Astronomy and Astrophysics*, 2020, 642, A16
- [52] Maksimovic, M., Bale, S. D., Chust, T., et al., The Solar Orbiter Radio and Plasma Waves (RPW) instrument[J]. *Astronomy and Astrophysics*, 2020, 642, A12
- [53] Horbury, T. S., O'Brien, H., Carrasco Blazquez, I., et al., The Solar Orbiter magnetometer[J]. *Astronomy and Astrophysics*, 2020, 642, A9
- [54] Rodríguez-Pacheco, J., Wimmer-Schweingruber, R. F., Mason, G. M., et al., The Energetic Particle Detector. Energetic particle instrument suite for the Solar Orbiter mission[J]. *Astronomy and Astrophysics*, 2020, 642, A77
- [55] Berghmans, D., Auchère, F., Long, D. M., et al., Extreme-UV quiet Sun brightenings observed by the Solar Orbiter/EUI[J]. *Astronomy and Astrophysics*, 2021, 656, L4
- [56] Berghmans, D., Antolin, P., Auchère, F., et al., First perihelion of EUI on the Solar Orbiter mission[J]. *Astronomy and Astrophysics*, 2023, 675, A110
- [57] Loeschl, P., Valori, G., Hirzberger, J., et al., A first rapid synoptic magnetic field map using SDO/HMI and SO/PHI data[J]. *Astronomy and Astrophysics*, 2024, 681, A59
- [58] Rivera, Y. J., Badman, S. T., Stevens, M. L., et al., In situ observations of large-amplitude Alfvén waves heating and accelerating the solar wind[J]. *Science*, 2024, 385, 962
- [59] Harra, L., Andretta, V., Appourchaux, T., et al., A journey of exploration to the polar regions of a star: probing the solar poles and the heliosphere from high helio-latitude[J]. *Experimental Astronomy*, 2022, 54, 157
- [60] Petrie, G. J. D., Solar Magnetism in the Polar Regions[J]. *Living Reviews in Solar Physics*, 2015, 12, 5
- [61] Guo, W., Jiang, J., & Wang, J.-X., A Dynamo-Based Prediction of Solar Cycle 25[J]. *Sol. Phys.*, 2021, 296, 136
- [62] Wang, Y. M., Sheeley, Jr., N. R., et al., A New Solar Cycle Model Including Meridional Circulation[J]. *The Astrophysical Journal*, 1991, 383, 431
- [63] Choudhuri, A. R., Schüssler, M., & Dikpati, M., The solar dynamo with meridional circulation[J]. *Astronomy and Astrophysics*, 1995, 303, L29
- [64] Hazra, G., Karak, B. B., & Choudhuri, A. R., Is a Deep One-cell Meridional Circulation Essential for the Flux Transport Solar Dynamo?[J]. *The Astrophysical Journal*, 2014, 782, 93
- [65] Schad, A., Timmer, J., & Roth, M., Global Helioseismic Evidence for a Deeply Penetrating Solar Meridional Flow Consisting of Multiple Flow Cells[J]. *The Astrophysical Journal*, 2013, 778, L38
- [66] Zhao, J., Bogart, R. S., Kosovichev, A. G., et al., Detection of Equatorward Meridional Flow and Evidence of Double-cell Meridional Circulation inside the Sun[J]. *The Astrophysical Journal*, 2013, 774, L29
- [67] Dikpati, M., & Gilman, P. A., Simulating and Predicting Solar Cycles Using a Flux-Transport Dynamo[J]. *The Astrophysical Journal*, 2006, 649, 498
- [68] Zhang, Z., & Jiang, J., A Babcock-Leighton-type Solar Dynamo Operating in the Bulk of the Convection Zone[J]. *The Astrophysical Journal*, 2022, 930, 30
- [69] Luo, Y., Jiang, J., & Wang, R., The Sun's Magnetic Power Spectra over Two Solar Cycles. II. Cycle Dependence of Active Regions, a Magnetic Network, and Their Relation[J]. *The Astrophysical Journal*, 2024, 970, 76
- [70] Howe, R., Solar Interior Rotation and its Variation[J]. *Living Reviews in Solar Physics*, 2009, 6, 1

- [71] Zhong, C., Jiang, J., & Zhang, Z., Discriminating between Babcock–Leighton-type Solar Dynamo Models by Torsional Oscillations[J]. *The Astrophysical Journal*, 2024, 969, 75
- [72] Kosovichev, A. G., & Pipin, V. V., Dynamo Wave Patterns inside of the Sun Revealed by Torsional Oscillations[J]. *The Astrophysical Journal*, 2019, 871, L20
- [73] Vorontsov, S. V., Christensen-Dalsgaard, J., Schou, J., et al., Helioseismic Measurement of Solar Torsional Oscillations[J]. *Science*, 2002, 296, 101
- [74] Vasil, G. M., Lecoanet, D., Augustson, K., et al., The solar dynamo begins near the surface[J]. *Nature*, 2024, 629, 769
- [75] Parker, E. N., Hydromagnetic Dynamo Models[J]. *The Astrophysical Journal*, 1955, 121, 491
- [76] Babcock, H. W., The Topology of the Sun's Magnetic Field and the 22-Year Cycle [J]. *The Astrophysical Journal*, 1961, 133, 572
- [77] Leighton, R. B., Transport of Magnetic Fields on the Sun[J]. *The Astrophysical Journal*, 1964, 140, 1547
- [78] Leighton, R. B., A Magneto-Kinematic Model of the Solar Cycle[J]. *The Astrophysical Journal*, 1969, 156, 1
- [79] Jiang, J., Hathaway, D. H., Cameron, R. H., et al., Magnetic Flux Transport at the Solar Surface[J]. *Space Sci. Rev.*, 2014, 186, 491
- [80] Jiang, J., Wang, J.-X., Jiao, Q.-R., & Cao, J.-B., Predictability of the Solar Cycle Over One Cycle[J]. *The Astrophysical Journal*, 2018, 863, 159
- [81] Hindman, B. W., Featherstone, N. A., & Julien, K., Morphological Classification of the Convective Regimes in Rotating Stars[J]. *The Astrophysical Journal*, 2020, 898, 120
- [82] Gizon, L., Cameron, R. H., Bekki, Y., et al., Solar inertial modes: Observations, identification, and diagnostic promise[J]. *Astronomy and Astrophysics*, 2021, 652, L6
- [83] Liang, Z.-C., & Gizon, L., Doppler velocity of $m = 1$ high-latitude inertial mode over the last five sunspot cycles[J]. *Astronomy and Astrophysics*, 2025, 695, A67
- [84] Zhao, J., Nagashima, K., Bogart, R. S., Kosovichev, A. G., & Duvall, Jr., T. L., Systematic Center-to-limb Variation in Measured Helioseismic Travel Times and its Effect on Inferences of Solar Interior Meridional Flows[J]. *The Astrophysical Journal*, 2012, 749, L5
- [85] Sekii, T., Appourchaux, T., Fleck, B., & Turck-Chièze, S., Future Mission Concepts for Helioseismology[J]. *Space Sci. Rev.*, 2015, 196, 285
- [86] Roth, M., Doerr, H. P., & Hartlep, T., Verification of the helioseismic Fourier-Legendre analysis for meridional flow measurements[J]. *Astronomy and Astrophysics*, 2016, 592, A106
- [87] Yang, D., Ghost Images in Helioseismic Holography? Toy Models in a Uniform Medium[J]. *Sol. Phys.*, 2018, 293, 17
- [88] Dasi-Espuig, M., Solanki, S. K., Krivova, N. A., Cameron, R., & Peñaflor, T., Sunspot group tilt angles and the strength of the solar cycle[J]. *Astronomy and Astrophysics*, 2010, 518, A711
- [89] Jiao, Q., Jiang, J., & Wang, Z.-F., Sunspot tilt angles revisited: Dependence on the solar cycle strength[J]. *Astronomy and Astrophysics*, 2021, 653, A27
- [90] Jiang, J., Nonlinear Mechanisms that Regulate the Solar Cycle Amplitude[J]. *The Astrophysical Journal*, 2020, 900, 19
- [91] Cameron, R. H., Jiang, J., Schmitt, D., & Schüssler, M., Surface Flux Transport Modeling for Solar Cycles 15-21: Effects of Cycle-Dependent Tilt Angles of Sunspot Groups[J]. *The Astrophysical Journal*, 2010, 719, 264
- [92] Cameron, R. H., Schmitt, D., Jiang, J., & İşik, E., Surface flux evolution constraints for flux transport dynamos[J]. *Astronomy and Astrophysics*, 2012, 542, A127
- [93] Cameron, R. H., Duvall, T. L., Schüssler, M., & Schunker, H., Observing and modeling the poloidal and toroidal fields of the solar dynamo[J]. *Astronomy and Astrophysics*, 2018, 609, A56
- [94] Ugarte-Urra, I., & Wang, Y.-M., Thin jets underlie the solar wind[J]. *Science*, 2023, 381, 833
- [95] Verscharen, D., Klein, K. G., & Maruca, B. A., The multi-scale nature of the solar wind[J]. *Living Reviews in Solar Physics*, 2019, 16, 5
- [96] Neugebauer, M., & Snyder, C. W., Solar Plasma Experiment[J]. *Science*, 1962, 138, 1095
- [97] Cranmer, S. R., Coronal Holes[J]. *Living Reviews in Solar Physics*, 2009, 6, 3
- [98] Brooks, D. H., Ugarte-Urra, I., & Warren, H. P., Full-Sun observations for identifying the source of the slow solar wind[J]. *Nature Communications*, 2015, 6, 5947
- [99] Sakao, T., Kano, R., Narukage, N., et al., Continuous Plasma Outflows from the Edge of a Solar Active Region as a Possible Source of Solar Wind[J]. *Science*, 2007, 318, 1585
- [100] Wang, Y.-M., & Sheeley, N. R., Jr., Latitudinal distribution of solar-wind speed from magnetic observations of the Sun[J]. *Nature*, 1990, 347, 439
- [101] Xia, L. D., Marsch, E., & Curdt, W., On the outflow in an equatorial coronal hole[J]. *Astronomy and Astrophysics*, 2003, 399, L5
- [102] Poletto, G., Solar Coronal Plumes[J]. *Living Reviews in Solar Physics*, 2015, 12, 7
- [103] Gabriel, A. H., Bely-Dubau, F., & Lemaire, P., The Contribution of Polar Plumes to the Fast Solar Wind[J]. *The Astrophysical Journal*, 2003, 589, 623
- [104] Wang, Y. M., Sheeley, Jr., N. R., Walters, J. H., et al., Origin of Streamer Material in the Outer Coron[J]. *The Astrophysical Journal*, 1998, 498, L165
- [105] De Pontieu, B., Title, A. M., Lemen, J. R., et al., The Interface Region Imaging Spectrograph (IRIS)[J]. *Sol. Phys.*, 2014, 289, 2733
- [106] Chitta, L. P., Huang, Z., D'Amicis, R., et al., Coronal hole picoflare jets are progenitors of both fast and Alfvénic slow solar wind[J]. *Astronomy and Astrophysics*, 2025, 694, A71
- [107] He, J.-S., Tu, C.-Y., & Marsch, E., Modeling of Solar Wind in the Coronal Funnel with Mass and Energy Supplied at 5 Mm[J]. *Sol. Phys.*, 2008, 250, 147
- [108] Yang, L., He, J., Peter, H., et al., Injection of Plasma into the Nascent Solar Wind via Reconnection Driven by

Supergranular Advection[J]. *The Astrophysical Journal*, 2013, 770, 6

[109] Bale, S. D., Drake, J. F., McManus, M. D., et al., Interchange reconnection as the source of the fast solar wind within coronal holes[J]. *Nature*, 2023, 618, 252

[110] Kennis, S., Perri, B., & Poedts, S., Magnetic connectivity from the Sun to the Earth with MHD models: I. Impact of the magnetic modelling on connectivity validation[J]. *Astronomy and Astrophysics*, 2024, 691, A257

[111] Cranmer, S. R., Gibson, S. E., & Riley, P., Origins of the Ambient Solar Wind: Implications for Space Weather[J]. *Space Sci. Rev.*, 2017, 212, 1345

[112] Richardson, I. G., Solar wind stream interaction regions throughout the heliosphere[J]. *Living Reviews in Solar Physics*, 2018, 15, 1

[113] Burlaga, L. F., & Szabo, A., Fast and Slow Flows in the Solar Wind Near the Ecliptic at 1 AU?[J]. *Space Sci. Rev.*, 1999, 87, 137

[114] Linker, J. A., Caplan, R. M., Downs, C., et al., The Open Flux Problem[J]. *The Astrophysical Journal*, 2017, 848, 70

[115] Zhou, Y. F., Feng, X. S., Wu, S. T., et al., Using a 3-D spherical plasmoid to interpret the Sun-to-Earth propagation of the 4 November 1997 coronal mass ejection event[J]. *Journal of Geophysical Research (Space Physics)*, 2012, 117, A01102

[116] Chen, P. F., Coronal Mass Ejections: Models and Their Observational Basis[J]. *Living Reviews in Solar Physics*, 2011, 8, 1

[117] Kaiser, M. L., Kucera, T. A., Davila, J. M., et al., The STEREO Mission: An Introduction[J]. *Space Sci. Rev.*, 2008, 136, 5 17

[118] Xiong, M., Davies, J. A., Li, B., et al., Prospective Out-of-ecliptic White-light Imaging of Interplanetary Corotating Interaction Regions at Solar Maximum[J]. *The Astrophysical Journal*, 2017, 844, 76

[119] Wang, Y., Wang, B., Shen, C., et al., Deflected propagation of a coronal mass ejection from the corona to interplanetary space[J]. *Journal of Geophysical Research (Space Physics)*, 2014, 119, 5117

[120] Xiong, M., Davies, J. A., Harrison, R. A., et al., Prospective Out-of-ecliptic White-light Imaging of Coronal Mass Ejections Traveling through the Corona and Heliosphere[J]. *The Astrophysical Journal*, 2018, 852, 111

[121] Verbeke, C., Mays, M. L., Kay, C., et al., Quantifying errors in 3D CME parameters derived from synthetic data using white-light reconstruction techniques[J]. *Advances in Space Research*, 2023, 72, 5243

[122] Odstrčil, D., & Pizzo, V. J., Three-dimensional propagation of coronal mass ejections in a structured solar wind flow 2. CME launched adjacent to the streamer belt[J]. *Journal of Geophysical Research*, 1999, 104, 493

[123] Shen, F., Feng, X., Wu, S. T., et al., Three-dimensional MHD simulation of CMEs in three-dimensional background solar wind with the self-consistent structure on the source surface as input: Numerical simulation of the January 1997 Sun-Earth connection event[J]. *Journal of Geophysical Research (Space Physics)*, 2007, 112, A06109

[124] Du, C., Ao, X., Luo, B., et al., Ensemble Numerical Simulations of Realistic SEP Events and the Inspiration for Space Weather Awareness[J]. *Research in Astronomy and Astrophysics*, 2022, 22, 025003

[125] Alexander, D., Sandman, A., Liewer, P., et al. Solar Polar Imager: Observing Solar Activity from a New Perspective[C]. in ESA Special Publication, 2005, Vol. 592, 663, Solar Wind 11/SOHO 16, Connecting Sun and Heliosphere, ed. B. Fleck, T. H. Zurbuchen, & H. Lacoste

[126] Liewer, P. C., Ayon, J., Alexander, D., et al., Solar Polar Imager: Observing Solar Activity from a New Perspective[M]. in NASA Space Science Vision Missions, 2008, Vol. 224, 1 19 ed. M. S. Allen,

[127] Appourchaux, T., Liewer, P., Watt, M., et al., POLAR investigation of the Sun—POLARIS[J]. *Experimental Astronomy*, 2009, 23, 1079

[128] Wu J, Sun W Y, Zheng J H, et al., Imaging interplanetary CMEs at radio frequency from solar polar orbit[J]. *Adv. Space Res.*, 2011, 48: 943

[129] Xiong, M., Liu, Y., Liu, H., et al., Overview of the Solar Polar Orbit Telescope Project for Space Weather Mission[J]. *Chinese Journal of Space Science*, 2016, 36, 245

[130] Hassler, D. M., Gibson, S. E., Newmark, J. S., et al. Solaris: A Focused Solar Polar Discovery-class Mission to achieve the Highest Priority Heliophysics Science Now[J]. in *Bulletin of the American Astronomical Society*, 2023, Vol. 55, 164 19, 20

[131] Kobayashi, K., Johnson, L., Thomas, H., et al., The High Inclination Solar Mission[J]. *arXiv e-prints*, 2020, arXiv:2006.03111 19, 20

[132] Pesnell, W. D., Thompson, B. J., & Chamberlin, P. C., The Solar Dynamics Observatory (SDO)[J]. *Sol. Phys.*, 2012, 275, 3

[133] Gan, W.-Q., Zhu, C., Deng, Y.-Y., et al., Advanced Space-based Solar Observatory (ASO-S): an overview[J]. *Research in Astronomy and Astrophysics*, 2019, 19, 15620

[134] Seetha, S., & Megala, S., Aditya-L1 mission[J]. *Current Science*, 2017, 113, 610 20

[135] DeForest, C., Killough, R., Gibson, S., et al., Polarimeter to UNify the Corona and Heliosphere (PUNCH): Science, Status, and Path to Flight[C]. In: 2022 IEEE Aerospace Conference (AERO), 1. 2022

[136] Palomba, M. and Luntama, J.-P., Vigil: ESA Space Weather Mission in L5[C]. 44th COSPAR Scientific Assembly. Held 16-24 July, 44:3544, 2022.

[137] Löptien, B., Birch, A. C., Gizon, L., et al., Helioseismology with Solar Orbiter[J]. *Space Sci. Rev.*, 2015, 196, 251

[138] Hou, C., He, J., Duan, D., et al., The origin of interplanetary switchbacks in reconnection at chromospheric network boundaries[J]. *Nature Astronomy*, 2024, 8, 1246

[139] Xu, Y., Tian, H., Hou, Z., et al., Sun-as-a-star Spectroscopic Observations of the Line-of-sight Velocity of a Solar Eruption on 2021 October 28[J]. *The Astrophysical Journal*, 2022, 931, 76

[140] Yang, Z., Tian, H., Bai, X., et al., Can We Detect Coronal Mass Ejections through Asymmetries of Sun-as-a-star Extreme-ultraviolet Spectral Line Profiles?[J]. *The Astrophysical Journal Supplement Series*, 2022, 260, 36

[141] Lu, H.-p., Tian, H., Chen, H.-c., et al., Full Velocities and Propagation Directions of Coronal Mass Ejections Inferred from Simultaneous Full-disk Imaging and Sun-as-a-star Spectroscopic Observations[J]. *The Astrophysical Journal*, 2023, 953, 68

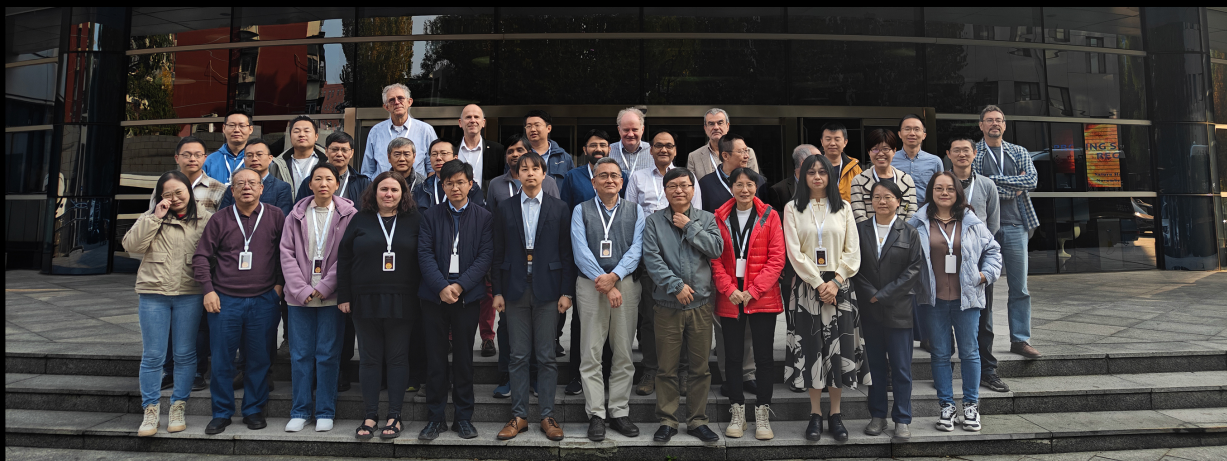
[142] Feng, L., Inhester, B., Solanki, S. K., et al., Stereoscopic Polar Plume Reconstructions from STEREO/SECCHI Images[J]. *The Astrophysical Journal*, 2009, 700, 292

[143] Wilhelm, K., Abbo, L., Auchère, F., et al., Morphology, dynamics and plasma parameters of plumes and inter-plume regions in solar coronal holes[J]. *The Astronomy and Astrophysics Review*, 2011, 19, 35

- [144] Telsoni, D., Zank, G. P., Stangalini, M., et al., Observation of a Magnetic Switchback in the Solar Corona[J]. *The Astrophysical Journal*, 2022, 936, L25
- [145] Feng, L., Wiegmann, T., Su, Y., et al., Magnetic Energy Partition between the Coronal Mass Ejection and Flare from AR 11283[J]. *The Astrophysical Journal*, 2013, 765, 37
- [146] Brueckner, G. E., Howard, R. A., Koomen, M. J., et al., The Large Angle Spectroscopic Coronagraph (LASCO)[J]. *Sol. Phys.*, 1995, 162, 357
- [147] Halekas, J. S., Bale, S. D., Berthomier, M., et al., Quantifying the Energy Budget in the Solar Wind from 13.3 to 100 Solar Radii[J]. *The Astrophysical Journal*, 2023, 952, 26
- [148] Holman, G. D., Sui, L., Schwartz, R. A., & Emslie, A. G., Electron Bremsstrahlung Hard X-Ray Spectra, Electron Distributions, and Energetics in the 2002 July 23 Solar Flare[J]. *The Astrophysical Journal*, 2003, 595, L97
- [149] Holman, G. D., Aschwanden, M. J., Aurass, H., et al., Implications of X-ray Observations for Electron Acceleration and Propagation in Solar Flares[J]. *Space Sci. Rev.*, 2011, 159, 107
- [150] Krucker, S., Battaglia, M., Cargill, P. J., et al., Hard X-ray emission from the solar corona[J]. *The Astronomy and Astrophysics Review*, 2008, 16, 155
- [151] Su, Y., Veronig, A. M., Holman, G. D., et al., Imaging coronal magnetic-field reconnection in a solar flare[J]. *Nature Physics*, 2013, 9, 489
- [152] Kane, S. R., Hurley, K., McTiernan, J. M., et al., Stereoscopic Observations of Solar Hard X-Ray Flares Made by ULYSSES and YOHKOH[J]. *The Astrophysical Journal*, 1998, 500, 1003
- [153] Paterson, S., Hannah, I. G., Grefenstette, B. W., et al., The First Survey of Quiet Sun Features Observed in Hard X-Rays with NuSTAR[J]. *Sol. Phys.*, 2023, 298, 47
- [154] Paterson, S., Hannah, I. G., Grefenstette, B. W., et al., Time evolution of X-ray bright points observed with NuSTAR[J]. *Monthly Notices of the Royal Astronomical Society*, 2024, 528, 6398
- [155] Golub, L., Krieger, A. S., Silk, J. K. et al., Solar X-Ray Bright Points[J]. *The Astrophysical Journal*, 1974, 189, L93
- [156] Harvey, K. L., Strong, K. T., Nitta, N. et al., Lifetimes and distribution of coronal bright points observed with Yohkoh[J]. *Advances in Space Research*, 1993, 13, 27
- [157] Alipour, N., & Safari, H., Statistical Properties of Solar Coronal Bright Points[J]. *The Astrophysical Journal*, 2015, 807, 175
- [158] Zhang, J., Kundu, M. R., & White, S. M., Spatial Distribution and Temporal Evolution of Coronal Bright Points[J]. *Sol. Phys.*, 2001, 198, 347

太空|TAIKONG

PARTICIPANTS AND CONTRIBUTORS



Yuanyong Deng	National Astronomical Observatories, Chinese Academy of Sciences, China
Hui Tian	Peking University, China
Jie Jiang	Beihang University, China
Shuhong Yang	National Astronomical Observatories, Chinese Academy of Sciences, China
Hao Li	National Space Science Center, Chinese Academy of Sciences, China
Robert Cameron	Max Planck Institute for Solar System Research, Germany
Laurent Gizon	Max Planck Institute for Solar System Research, Germany
Louise Harra	Physikalisch-Meteorologisches Observatorium Davos, World Radiation Center, Switzerland
Robert F. Wimmer-Schweingruber	Kiel University, Germany
Frédéric Auchère	Space Astrophysics Institute, France
Xianyong Bai	National Astronomical Observatories, Chinese Academy of Sciences, China
Luis Bellot Rubio	Institute of Astrophysics of Andalusia, Spain
Linjie Chen	National Space Science Center, Chinese Academy of Sciences,
Pengfei Chen	Nanjing University, China
Lakshmi Pradeep Chitta	Max Planck Institute for Solar System Research, Germany
Jackie Davies	Rutherford Appleton Laboratory, UK
Fabio Favata	Imperial College London, UK
Li Feng	Purple Mountain Observatory, Chinese Academy of Sciences, China
Xueshang Feng	National Space Science Center, Chinese Academy of Sciences, China
Wei qun Gan	Purple Mountain Observatory, Chinese Academy of Sciences, China
Don Hassler	Southwest Research Institute, Boulder, USA
Jiansen He	Peking University, China
Junfeng Hou	National Astronomical Observatories, Chinese Academy of Sciences, China
Zhenyong Hou	Peking University, China
Chunlan Jin	National Astronomical Observatories, Chinese Academy of Sciences, China
Wenya Li	National Space Science Center, Chinese Academy of Sciences, China
Jiaben Lin	National Astronomical Observatories, Chinese Academy of Sciences, China
Dibyendu Nandi	Indian Institute of Science Education and Research Kolkata, India
Vaibhav Pant	Aryabhata Research Institute of Observational Sciences, India
Marco Romoli	University of Florence, Italy
Taro Sakao	Institute of Space and Astronautical Science, Japan Aerospace Exploration Agency, Japan
Krishna Prasad Sayamanthula	Aryabhata Research Institute of Observational Sciences, India
Fang Shen	National Space Science Center, Chinese Academy of Sciences, China
Yang Su	Purple Mountain Observatory, Chinese Academy of Sciences, China
Shin Toriumi	Institute of Space and Astronautical Science, Japan Aerospace Exploration Agency, Japan
Durgesh Tripathi	Inter-University Centre for Astronomy and Astrophysics, India
Linghua Wang	Peking University, China
Jingjing Wang	National Space Science Center, Chinese Academy of Sciences, China
Lidong Xia	Shandong University, China
Ming Xiong	National Space Science Center, Chinese Academy of Sciences, China
Yihua Yan	National Space Science Center, Chinese Academy of Sciences, China
Liping Yang	National Space Science Center, Chinese Academy of Sciences, China
Shangbin Yang	National Astronomical Observatories, Chinese Academy of Sciences, China
Mei Zhang	National Astronomical Observatories, Chinese Academy of Sciences, China
Guiping Zhou	National Astronomical Observatories, Chinese Academy of Sciences, China
Xiaoshuai Zhu	National Space Science Center, Chinese Academy of Sciences, China
Jingxiu Wang	National Astronomical Observatories, Chinese Academy of Sciences, China